

**The Standard**  
RESIDENCES

BRICKELL MIAMI

**RESIDENCE 01**

**2 BEDROOMS – 2 BATH  
LEVEL 11 – 41**

Interior 965 SF/90 M<sup>2</sup>

Terrace 279 SF/26 M<sup>2</sup>

Total 1,244 SF - 116 M<sup>2</sup>

Faces West



Furniture, accessories, and layout are for illustrative purposes only.  
Residences are delivered unfurnished unless a furniture upgrade package is purchased.

ORAL REPRESENTATIONS CANNOT BE RELIED UPON AS CORRECTLY STATING THE REPRESENTATIONS OF THE DEVELOPER. FOR CORRECT REPRESENTATIONS, MAKE REFERENCE TO THIS BROCHURE AND TO THE DOCUMENTS REQUIRED BY SECTION 718.503, FLORIDA STATUTES, TO BE FURNISHED BY A DEVELOPER TO A BUYER OR LESSEE. This project is being developed by Loftly™ Brickell LLC (the "Developer"), which was formed solely for such purpose. Any other parties described herein are not the Developer of this project. This Condominium and project are being developed by Loftly™ Brickell LLC, a Delaware limited liability company ("Developer"), which has a limited right to use the trademarked names and logos of Standard International Management, LLC pursuant to a license and marketing agreement with Standard International Management, LLC. Any and all statements, disclosures and/or representations shall be deemed made by Developer and not by Standard International Management, LLC and you agree to look solely to Developer (and not to Standard International Management, LLC and/or any of its affiliates) with respect to any and all matters relating to the marketing and/or development of the Condominium and project and with respect to the sales of units in the Condominium and project. Stated dimensions are measured to the exterior boundaries of the exterior walls and the centerline of interior demising walls and in fact vary from the dimensions that would be determined by using the description and definition of the "Unit" set forth in the Declaration (which generally only includes the interior airspace between the perimeter walls and excludes interior structural components). For your reference, the area of the Unit, determined in accordance with those defined unit boundaries, is 1,385 SF - 129 M<sup>2</sup>. Note that measurements of rooms set forth on this floor plan are generally taken at the greatest points of each given room (as if the room were a perfect rectangle), without regard for any cutouts. Accordingly, the area of the actual room will typically be smaller than the product obtained by multiplying the stated length times width. All dimensions are approximate and may vary with actual construction, and all floor plans and development plans are subject to change. The sketches, renderings, graphic materials, plans, specifications, terms, conditions and statements contained in this brochure are proposed only and may not be applicable to all Units and the Developer reserves the right to modify, revise or withdraw any or all of same in its sole discretion and without prior notice. All improvements, designs and construction are subject to first obtaining the appropriate federal, state and local permits and approvals for same. All depictions of appliances, counters, soffits, floor coverings and other furniture, fixtures, equipment and matters of detail, including, without limitation, items of finish and decoration, are conceptual only and are not necessarily included in each Unit. Consult your Agreement and the Prospectus for the items included with the Unit. Dimensions and square footage are approximate and may vary with actual construction.

THE BUILDING  
690 SW 1st Avenue  
Miami, Florida 33130

THE SALES GALLERY  
115 SW 8th Street (Unit 6) Miami  
Florida 33130

**The Standard**  
RESIDENCES

BRICKELL MIAMI

**RESIDENCE 02**

**1 BEDROOM – 1 BATH  
LEVEL 11 – 41**

Interior 727 SF/68 M<sup>2</sup>

Terrace 168 SF/16 M<sup>2</sup>

Total 895 SF - 83 M<sup>2</sup>

Faces West



Furniture, accessories, and layout are for illustrative purposes only.  
Residences are delivered unfurnished unless a furniture upgrade package is purchased.

ORAL REPRESENTATIONS CANNOT BE RELIED UPON AS CORRECTLY STATING THE REPRESENTATIONS OF THE DEVELOPER. FOR CORRECT REPRESENTATIONS, MAKE REFERENCE TO THIS BROCHURE AND TO THE DOCUMENTS REQUIRED BY SECTION 718.503, FLORIDA STATUTES, TO BE FURNISHED BY A DEVELOPER TO A BUYER OR LESSEE. This project is being developed by Loftly™ Brickell LLC (the "Developer"), which was formed solely for such purpose. Any other parties described herein are not the Developer of this project. This Condominium and project are being developed by Loftly™ Brickell LLC, a Delaware limited liability company ("Developer"), which has a limited right to use the trademarked names and logos of Standard International Management, LLC pursuant to a license and marketing agreement with Standard International Management, LLC. Any and all statements, disclosures and/or representations shall be deemed made by Developer and not by Standard International Management, LLC and you agree to look solely to Developer (and not to Standard International Management, LLC and/or any of its affiliates) with respect to any and all matters relating to the marketing and/or development of the Condominium and project and with respect to the sales of units in the Condominium and project. Stated dimensions are measured to the exterior boundaries of the exterior walls and the centerline of interior demising walls and in fact vary from the dimensions that would be determined by using the description and definition of the "Unit" set forth in the Declaration (which generally only includes the interior airspace between the perimeter walls and excludes interior structural components). For your reference, the area of the Unit, determined in accordance with those defined unit boundaries, is 1,386 SF - 129 M<sup>2</sup>. Note that measurements of rooms set forth on this floor plan are generally taken at the greatest points of each given room (as if the room were a perfect rectangle), without regard for any cutouts. Accordingly, the area of the actual room will typically be smaller than the product obtained by multiplying the stated length times width. All dimensions are approximate and may vary with actual construction, and all floor plans and development plans are subject to change. The sketches, renderings, graphic materials, plans, specifications, terms, conditions and statements contained in this brochure are proposed only and may not be applicable to all Units and the Developer reserves the right to modify, revise or withdraw any or all of same in its sole discretion and without prior notice. All improvements, designs and construction are subject to first obtaining the appropriate federal, state and local permits and approvals for same. All depictions of appliances, counters, soffits, floor coverings and other furniture, fixtures, equipment and matters of detail, including, without limitation, items of finish and decoration, are conceptual only and are not necessarily included in each Unit. Consult your Agreement and the Prospectus for the items included with the Unit. Dimensions and square footage are approximate and may vary with actual construction.

THE BUILDING  
690 SW 1st Avenue  
Miami, Florida 33130

THE SALES GALLERY  
115 SW 8th Street (Unit 6) Miami  
Florida 33130

**RESIDENCE 03**

**STUDIO  
LEVEL 11 – 41**

Interior 491 SF/46 M<sup>2</sup>

Terrace N/A

Total 491 SF - 46 M<sup>2</sup>

Faces North

**THE BUILDING**  
690 SW 1st Avenue  
Miami, Florida 33130

**THE SALES GALLERY**  
115 SW 8th Street (Unit 6) Miami  
Florida 33130



Furniture, accessories, and layout are for illustrative purposes only.  
Residences are delivered unfurnished unless a furniture upgrade package is purchased.

ORAL REPRESENTATIONS CANNOT BE RELIED UPON AS CORRECTLY STATING THE REPRESENTATIONS OF THE DEVELOPER. FOR CORRECT REPRESENTATIONS, MAKE REFERENCE TO THIS BROCHURE AND TO THE DOCUMENTS REQUIRED BY SECTION 718.503, FLORIDA STATUTES, TO BE FURNISHED BY A DEVELOPER TO A BUYER OR LESSEE. This project is being developed by Loftly™ Brickell LLC (the "Developer"), which was formed solely for such purpose. Any other parties described herein are not the Developer of this project. This Condominium and project are being developed by Loftly™ Brickell LLC, a Delaware limited liability company ("Developer"), which has a limited right to use the trademarked names and logos of Standard International Management, LLC pursuant to a license and marketing agreement with Standard International Management, LLC. Any and all statements, disclosures and/or representations shall be deemed made by Developer and not by Standard International Management, LLC and you agree to look solely to Developer (and not to Standard International Management, LLC and/or any of its affiliates) with respect to any and all matters relating to the marketing and/or development of the Condominium and project and with respect to the sales of units in the Condominium and project. Stated dimensions are measured to the exterior boundaries of the exterior walls and the centerline of interior demising walls and in fact vary from the dimensions that would be determined by using the description and definition of the "Unit" set forth in the Declaration (which generally only includes the interior airspace between the perimeter walls and excludes interior structural components). For your reference, the area of the Unit, determined in accordance with those defined unit boundaries, is 1,385 SF – 129 M<sup>2</sup>. Note that measurements of rooms set forth on this floor plan are generally taken at the greatest points of each given room (as if the room were a perfect rectangle), without regard for any cutouts. Accordingly, the area of the actual room will typically be smaller than the product obtained by multiplying the stated length times width. All dimensions are approximate and may vary with actual construction, and all floor plans and development plans are subject to change. The sketches, renderings, graphic materials, plans, specifications, terms, conditions and statements contained in this brochure are proposed only and may not be applicable to all Units and the Developer reserves the right to modify, revise or withdraw any or all of same in its sole discretion and without prior notice. All improvements, designs and construction are subject to first obtaining the appropriate federal, state and local permits and approvals for same. All depictions of appliances, counters, soffits, floor coverings and other furniture, fixtures, equipment and matters of detail, including, without limitation, items of finish and decoration, are conceptual only and are not necessarily included in each Unit. Consult your Agreement and the Prospectus for the items included with the Unit. Dimensions and square footage are approximate and may vary with actual construction.

**RESIDENCE 04**

**1 BEDROOM – 1 BATH  
LEVEL 11 – 41**

Interior 707 SF/67 M<sup>2</sup>

Terrace 161 SF/15 M<sup>2</sup>

Total 868 SF - 82 M<sup>2</sup>

Faces East

**THE BUILDING**  
690 SW 1st Avenue  
Miami, Florida 33130

**THE SALES GALLERY**  
115 SW 8th Street (Unit 6) Miami  
Florida 33130



Furniture, accessories, and layout are for illustrative purposes only.  
Residences are delivered unfurnished unless a furniture upgrade package is purchased.

ORAL REPRESENTATIONS CANNOT BE RELIED UPON AS CORRECTLY STATING THE REPRESENTATIONS OF THE DEVELOPER. FOR CORRECT REPRESENTATIONS, MAKE REFERENCE TO THIS BROCHURE AND TO THE DOCUMENTS REQUIRED BY SECTION 718.503, FLORIDA STATUTES, TO BE FURNISHED BY A DEVELOPER TO A BUYER OR LESSEE. This project is being developed by Loftly™ Brickell LLC (the "Developer"), which was formed solely for such purpose. Any other parties described herein are not the Developer of this project. This Condominium and project are being developed by Loftly™ Brickell LLC, a Delaware limited liability company ("Developer"), which has a limited right to use the trademarked names and logos of Standard International Management, LLC pursuant to a license and marketing agreement with Standard International Management, LLC. Any and all statements, disclosures and/or representations shall be deemed made by Developer and not by Standard International Management, LLC and you agree to look solely to Developer (and not to Standard International Management, LLC and/or any of its affiliates) with respect to any and all matters relating to the marketing and/or development of the Condominium and project and with respect to the sales of units in the Condominium and project. Stated dimensions are measured to the exterior boundaries of the exterior walls and the centerline of interior demising walls and in fact vary from the dimensions that would be determined by using the description and definition of the "Unit" set forth in the Declaration (which generally only includes the interior airspace between the perimeter walls and excludes interior structural components). For your reference, the area of the Unit, determined in accordance with those defined unit boundaries, is 1,386 SF – 129 M<sup>2</sup>. Note that measurements of rooms set forth on this floor plan are generally taken at the greatest points of each given room (as if the room were a perfect rectangle), without regard for any cutouts. Accordingly, the area of the actual room will typically be smaller than the product obtained by multiplying the stated length times width. All dimensions are approximate and may vary with actual construction, and all floor plans and development plans are subject to change. The sketches, renderings, graphic materials, plans, specifications, terms, conditions and statements contained in this brochure are proposed only and may not be applicable to all Units and the Developer reserves the right to modify, revise or withdraw any or all of same in its sole discretion and without prior notice. All improvements, designs and construction are subject to first obtaining the appropriate federal, state and local permits and approvals for same. All depictions of appliances, counters, soffits, floor coverings and other furniture, fixtures, equipment and matters of detail, including, without limitation, items of finish and decoration, are conceptual only and are not necessarily included in each Unit. Consult your Agreement and the Prospectus for the items included with the Unit. Dimensions and square footage are approximate and may vary with actual construction.

**RESIDENCE 05**

**1 BEDROOM – 1 BATH  
LEVEL 11 – 41**

Interior 548 SF/51 M<sup>2</sup>

Terrace 131 SF/12 M<sup>2</sup>

Total 679 SF - 63 M<sup>2</sup>

Faces East



Furniture, accessories, and layout are for illustrative purposes only.  
Residences are delivered unfurnished unless a furniture upgrade package is purchased.

ORAL REPRESENTATIONS CANNOT BE RELIED UPON AS CORRECTLY STATING THE REPRESENTATIONS OF THE DEVELOPER. FOR CORRECT REPRESENTATIONS, MAKE REFERENCE TO THIS BROCHURE AND TO THE DOCUMENTS REQUIRED BY SECTION 718.503, FLORIDA STATUTES, TO BE FURNISHED BY A DEVELOPER TO A BUYER OR LESSEE. This project is being developed by Lofty™ Brickell LLC (the "Developer"), which was formed solely for such purpose. Any other parties described herein are not the Developer of this project. This Condominium and project are being developed by Lofty™ Brickell LLC, a Delaware limited liability company ("Developer"), which has a limited right to use the trademarked names and logos of Standard International Management, LLC pursuant to a license and marketing agreement with Standard International Management, LLC. Any and all statements, disclosures and/or representations shall be deemed made by Developer and not by Standard International Management, LLC and you agree to look solely to Developer (and not to Standard International Management, LLC and/or any of its affiliates) with respect to any and all matters relating to the marketing and/or development of the Condominium and project and with respect to the sales of units in the Condominium and project. Stated dimensions are measured to the exterior boundaries of the exterior walls and the centerline of interior demising walls and in fact vary from the dimensions that would be determined by using the description and definition of the "Unit" set forth in the Declaration (which generally only includes the interior airspace between the perimeter walls and excludes interior structural components). For your reference, the area of the Unit, determined in accordance with those defined unit boundaries, is 1,385 SF - 129 M<sup>2</sup>. Note that measurements of rooms set forth on this floor plan are generally taken at the greatest points of each given room (as if the room were a perfect rectangle), without regard for any cutouts. Accordingly, the area of the actual room will typically be smaller than the product obtained by multiplying the stated length times width. All dimensions are approximate and may vary with actual construction, and all floor plans and development plans are subject to change. The sketches, renderings, graphic materials, plans, specifications, terms, conditions and statements contained in this brochure are proposed only and may not be applicable to all Units and the Developer reserves the right to modify, revise or withdraw any or all of same in its sole discretion and without prior notice. All improvements, designs and construction are subject to first obtaining the appropriate federal, state and local permits and approvals for same. All depictions of appliances, counters, soffits, floor coverings and other furniture, fixtures, equipment and matters of detail, including, without limitation, items of finish and decoration, are conceptual only and are not necessarily included in each Unit. Consult your Agreement and the Prospectus for the items included with the Unit. Dimensions and square footage are approximate and may vary with actual construction.

THE BUILDING  
690 SW 1st Avenue  
Miami, Florida 33130

THE SALES GALLERY  
115 SW 8th Street (Unit 6) Miami  
Florida 33130

**RESIDENCE 06**

**1 BEDROOM – 1 BATH  
LEVEL 11 – 41**

Interior 548 SF/51 M<sup>2</sup>

Terrace 131 SF/12 M<sup>2</sup>

Total 679 SF - 63 M<sup>2</sup>

Faces East



Furniture, accessories, and layout are for illustrative purposes only.  
Residences are delivered unfurnished unless a furniture upgrade package is purchased.

ORAL REPRESENTATIONS CANNOT BE RELIED UPON AS CORRECTLY STATING THE REPRESENTATIONS OF THE DEVELOPER. FOR CORRECT REPRESENTATIONS, MAKE REFERENCE TO THIS BROCHURE AND TO THE DOCUMENTS REQUIRED BY SECTION 718.503, FLORIDA STATUTES, TO BE FURNISHED BY A DEVELOPER TO A BUYER OR LESSEE. This project is being developed by Lofty™ Brickell LLC (the "Developer"), which was formed solely for such purpose. Any other parties described herein are not the Developer of this project. This Condominium and project are being developed by Lofty™ Brickell LLC, a Delaware limited liability company ("Developer"), which has a limited right to use the trademarked names and logos of Standard International Management, LLC pursuant to a license and marketing agreement with Standard International Management, LLC. Any and all statements, disclosures and/or representations shall be deemed made by Developer and not by Standard International Management, LLC and you agree to look solely to Developer (and not to Standard International Management, LLC and/or any of its affiliates) with respect to any and all matters relating to the marketing and/or development of the Condominium and project and with respect to the sales of units in the Condominium and project. Stated dimensions are measured to the exterior boundaries of the exterior walls and the centerline of interior demising walls and in fact vary from the dimensions that would be determined by using the description and definition of the "Unit" set forth in the Declaration (which generally only includes the interior airspace between the perimeter walls and excludes interior structural components). For your reference, the area of the Unit, determined in accordance with those defined unit boundaries, is 1,386 SF - 129 M<sup>2</sup>. Note that measurements of rooms set forth on this floor plan are generally taken at the greatest points of each given room (as if the room were a perfect rectangle), without regard for any cutouts. Accordingly, the area of the actual room will typically be smaller than the product obtained by multiplying the stated length times width. All dimensions are approximate and may vary with actual construction, and all floor plans and development plans are subject to change. The sketches, renderings, graphic materials, plans, specifications, terms, conditions and statements contained in this brochure are proposed only and may not be applicable to all Units and the Developer reserves the right to modify, revise or withdraw any or all of same in its sole discretion and without prior notice. All improvements, designs and construction are subject to first obtaining the appropriate federal, state and local permits and approvals for same. All depictions of appliances, counters, soffits, floor coverings and other furniture, fixtures, equipment and matters of detail, including, without limitation, items of finish and decoration, are conceptual only and are not necessarily included in each Unit. Consult your Agreement and the Prospectus for the items included with the Unit. Dimensions and square footage are approximate and may vary with actual construction.

THE BUILDING  
690 SW 1st Avenue  
Miami, Florida 33130

THE SALES GALLERY  
115 SW 8th Street (Unit 6) Miami  
Florida 33130

**RESIDENCE 07**

**1 BEDROOM – 1 BATH  
LEVEL 11 – 41**

Interior 548 SF/51 M<sup>2</sup>

Terrace 131 SF/12 M<sup>2</sup>

Total 679 SF - 63 M<sup>2</sup>

Faces East



Furniture, accessories, and layout are for illustrative purposes only.  
Residences are delivered unfurnished unless a furniture upgrade package is purchased.

ORAL REPRESENTATIONS CANNOT BE RELIED UPON AS CORRECTLY STATING THE REPRESENTATIONS OF THE DEVELOPER. FOR CORRECT REPRESENTATIONS, MAKE REFERENCE TO THIS BROCHURE AND TO THE DOCUMENTS REQUIRED BY SECTION 718.503, FLORIDA STATUTES, TO BE FURNISHED BY A DEVELOPER TO A BUYER OR LESSEE. This project is being developed by Loftly™ Brickell LLC (the "Developer"), which was formed solely for such purpose. Any other parties described herein are not the Developer of this project. This Condominium and project are being developed by Loftly™ Brickell LLC, a Delaware limited liability company ("Developer"), which has a limited right to use the trademarked names and logos of Standard International Management, LLC pursuant to a license and marketing agreement with Standard International Management, LLC. Any and all statements, disclosures and/or representations shall be deemed made by Developer and not by Standard International Management, LLC and you agree to look solely to Developer (and not to Standard International Management, LLC and/or any of its affiliates) with respect to any and all matters relating to the marketing and/or development of the Condominium and project and with respect to the sales of units in the Condominium and project. Stated dimensions are measured to the exterior boundaries of the exterior walls and the centerline of interior demising walls and in fact vary from the dimensions that would be determined by using the description and definition of the "Unit" set forth in the Declaration (which generally only includes the interior airspace between the perimeter walls and excludes interior structural components). For your reference, the area of the Unit, determined in accordance with those defined unit boundaries, is 1,386 SF – 129 M<sup>2</sup>. Note that measurements of rooms set forth on this floor plan are generally taken at the greatest points of each given room (as if the room were a perfect rectangle), without regard for any cutouts. Accordingly, the area of the actual room will typically be smaller than the product obtained by multiplying the stated length times width. All dimensions are approximate and may vary with actual construction, and all floor plans and development plans are subject to change. The sketches, renderings, graphic materials, plans, specifications, terms, conditions and statements contained in this brochure are proposed only and may not be applicable to all Units and the Developer reserves the right to modify, revise or withdraw any or all of same in its sole discretion and without prior notice. All improvements, designs and construction are subject to first obtaining the appropriate federal, state and local permits and approvals for same. All depictions of appliances, counters, soffits, floor coverings and other furniture, fixtures, equipment and matters of detail, including, without limitation, items of finish and decoration, are conceptual only and are not necessarily included in each Unit. Consult your Agreement and the Prospectus for the items included with the Unit. Dimensions and square footage are approximate and may vary with actual construction.

THE BUILDING  
690 SW 1st Avenue  
Miami, Florida 33130

THE SALES GALLERY  
115 SW 8th Street (Unit 6) Miami  
Florida 33130

**RESIDENCE 08**

**1 BEDROOM – 1 BATH  
LEVEL 11 – 41**

Interior 548 SF/51 M<sup>2</sup>

Terrace 131 SF/12 M<sup>2</sup>

Total 679 SF - 63 M<sup>2</sup>

Faces East



Furniture, accessories, and layout are for illustrative purposes only.  
Residences are delivered unfurnished unless a furniture upgrade package is purchased.

ORAL REPRESENTATIONS CANNOT BE RELIED UPON AS CORRECTLY STATING THE REPRESENTATIONS OF THE DEVELOPER. FOR CORRECT REPRESENTATIONS, MAKE REFERENCE TO THIS BROCHURE AND TO THE DOCUMENTS REQUIRED BY SECTION 718.503, FLORIDA STATUTES, TO BE FURNISHED BY A DEVELOPER TO A BUYER OR LESSEE. This project is being developed by Loftly™ Brickell LLC (the "Developer"), which was formed solely for such purpose. Any other parties described herein are not the Developer of this project. This Condominium and project are being developed by Loftly™ Brickell LLC, a Delaware limited liability company ("Developer"), which has a limited right to use the trademarked names and logos of Standard International Management, LLC pursuant to a license and marketing agreement with Standard International Management, LLC. Any and all statements, disclosures and/or representations shall be deemed made by Developer and not by Standard International Management, LLC and you agree to look solely to Developer (and not to Standard International Management, LLC and/or any of its affiliates) with respect to any and all matters relating to the marketing and/or development of the Condominium and project and with respect to the sales of units in the Condominium and project. Stated dimensions are measured to the exterior boundaries of the exterior walls and the centerline of interior demising walls and in fact vary from the dimensions that would be determined by using the description and definition of the "Unit" set forth in the Declaration (which generally only includes the interior airspace between the perimeter walls and excludes interior structural components). For your reference, the area of the Unit, determined in accordance with those defined unit boundaries, is 1,386 SF – 129 M<sup>2</sup>. Note that measurements of rooms set forth on this floor plan are generally taken at the greatest points of each given room (as if the room were a perfect rectangle), without regard for any cutouts. Accordingly, the area of the actual room will typically be smaller than the product obtained by multiplying the stated length times width. All dimensions are approximate and may vary with actual construction, and all floor plans and development plans are subject to change. The sketches, renderings, graphic materials, plans, specifications, terms, conditions and statements contained in this brochure are proposed only and may not be applicable to all Units and the Developer reserves the right to modify, revise or withdraw any or all of same in its sole discretion and without prior notice. All improvements, designs and construction are subject to first obtaining the appropriate federal, state and local permits and approvals for same. All depictions of appliances, counters, soffits, floor coverings and other furniture, fixtures, equipment and matters of detail, including, without limitation, items of finish and decoration, are conceptual only and are not necessarily included in each Unit. Consult your Agreement and the Prospectus for the items included with the Unit. Dimensions and square footage are approximate and may vary with actual construction.

THE BUILDING  
690 SW 1st Avenue  
Miami, Florida 33130

THE SALES GALLERY  
115 SW 8th Street (Unit 6) Miami  
Florida 33130

**RESIDENCE 09**

**2 BEDROOMS – 2 BATH  
LEVEL 11 – 41**

Interior 960 SF/89 M<sup>2</sup>

Terrace 381 SF/35 M<sup>2</sup>

Total 1,341 SF - 125 M<sup>2</sup>

Faces Southeast



Furniture, accessories, and layout are for illustrative purposes only.  
Residences are delivered unfurnished unless a furniture upgrade package is purchased.

ORAL REPRESENTATIONS CANNOT BE RELIED UPON AS CORRECTLY STATING THE REPRESENTATIONS OF THE DEVELOPER. FOR CORRECT REPRESENTATIONS, MAKE REFERENCE TO THIS BROCHURE AND TO THE DOCUMENTS REQUIRED BY SECTION 718.503, FLORIDA STATUTES, TO BE FURNISHED BY A DEVELOPER TO A BUYER OR LESSEE. This project is being developed by Loftly™ Brickell LLC (the "Developer"), which was formed solely for such purpose. Any other parties described herein are not the Developer of this project. This Condominium and project are being developed by Loftly™ Brickell LLC, a Delaware limited liability company ("Developer"), which has a limited right to use the trademarked names and logos of Standard International Management, LLC pursuant to a license and marketing agreement with Standard International Management, LLC. Any and all statements, disclosures and/or representations shall be deemed made by Developer and not by Standard International Management, LLC and you agree to look solely to Developer (and not to Standard International Management, LLC and/or any of its affiliates) with respect to any and all matters relating to the marketing and/or development of the Condominium and project and with respect to the sales of units in the Condominium and project. Stated dimensions are measured to the exterior boundaries of the exterior walls and the centerline of interior demising walls and in fact vary from the dimensions that would be determined by using the description and definition of the "Unit" set forth in the Declaration (which generally only includes the interior airspace between the perimeter walls and excludes interior structural components). For your reference, the area of the Unit, determined in accordance with those defined unit boundaries, is 1,385 SF – 129 M<sup>2</sup>. Note that measurements of rooms set forth on this floor plan are generally taken at the greatest points of each given room (as if the room were a perfect rectangle), without regard for any cutouts. Accordingly, the area of the actual room will typically be smaller than the product obtained by multiplying the stated length times width. All dimensions are approximate and may vary with actual construction, and all floor plans and development plans are subject to change. The sketches, renderings, graphic materials, plans, specifications, terms, conditions and statements contained in this brochure are proposed only and may not be applicable to all Units and the Developer reserves the right to modify, revise or withdraw any or all of same in its sole discretion and without prior notice. All improvements, designs and construction are subject to first obtaining the appropriate federal, state and local permits and approvals for same. All depictions of appliances, counters, soffits, floor coverings and other furniture, fixtures, equipment and matters of detail, including, without limitation, items of finish and decoration, are conceptual only and are not necessarily included in each Unit. Consult your Agreement and the Prospectus for the items included with the Unit. Dimensions and square footage are approximate and may vary with actual construction.

THE BUILDING  
690 SW 1st Avenue  
Miami, Florida 33130

THE SALES GALLERY  
115 SW 8th Street (Unit 6) Miami  
Florida 33130

**RESIDENCE 10**

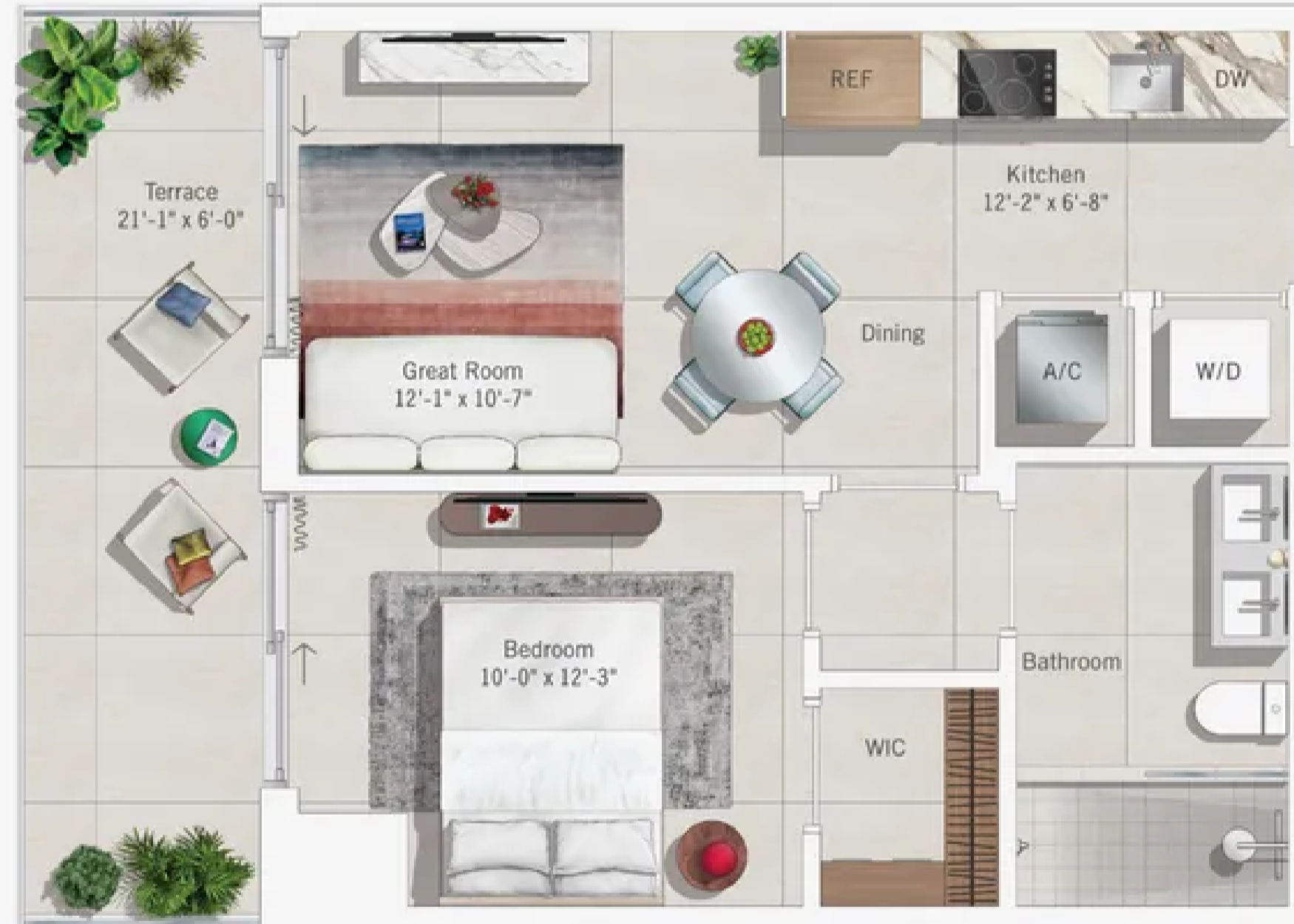
**1 BEDROOM – 1 BATH  
LEVEL 11 – 41**

Interior 552 SF/51 M<sup>2</sup>

Terrace 130 SF/12 M<sup>2</sup>

Total 682 SF - 63 M<sup>2</sup>

Faces South



Furniture, accessories, and layout are for illustrative purposes only.  
Residences are delivered unfurnished unless a furniture upgrade package is purchased.

ORAL REPRESENTATIONS CANNOT BE RELIED UPON AS CORRECTLY STATING THE REPRESENTATIONS OF THE DEVELOPER. FOR CORRECT REPRESENTATIONS, MAKE REFERENCE TO THIS BROCHURE AND TO THE DOCUMENTS REQUIRED BY SECTION 718.503, FLORIDA STATUTES, TO BE FURNISHED BY A DEVELOPER TO A BUYER OR LESSEE. This project is being developed by Loftly™ Brickell LLC (the "Developer"), which was formed solely for such purpose. Any other parties described herein are not the Developer of this project. This Condominium and project are being developed by Loftly™ Brickell LLC, a Delaware limited liability company ("Developer"), which has a limited right to use the trademarked names and logos of Standard International Management, LLC pursuant to a license and marketing agreement with Standard International Management, LLC. Any and all statements, disclosures and/or representations shall be deemed made by Developer and not by Standard International Management, LLC and you agree to look solely to Developer (and not to Standard International Management, LLC and/or any of its affiliates) with respect to any and all matters relating to the marketing and/or development of the Condominium and project and with respect to the sales of units in the Condominium and project. Stated dimensions are measured to the exterior boundaries of the exterior walls and the centerline of interior demising walls and in fact vary from the dimensions that would be determined by using the description and definition of the "Unit" set forth in the Declaration (which generally only includes the interior airspace between the perimeter walls and excludes interior structural components). For your reference, the area of the Unit, determined in accordance with those defined unit boundaries, is 1,385 SF – 129 M<sup>2</sup>. Note that measurements of rooms set forth on this floor plan are generally taken at the greatest points of each given room (as if the room were a perfect rectangle), without regard for any cutouts. Accordingly, the area of the actual room will typically be smaller than the product obtained by multiplying the stated length times width. All dimensions are approximate and may vary with actual construction, and all floor plans and development plans are subject to change. The sketches, renderings, graphic materials, plans, specifications, terms, conditions and statements contained in this brochure are proposed only and may not be applicable to all Units and the Developer reserves the right to modify, revise or withdraw any or all of same in its sole discretion and without prior notice. All improvements, designs and construction are subject to first obtaining the appropriate federal, state and local permits and approvals for same. All depictions of appliances, counters, soffits, floor coverings and other furniture, fixtures, equipment and matters of detail, including, without limitation, items of finish and decoration, are conceptual only and are not necessarily included in each Unit. Consult your Agreement and the Prospectus for the items included with the Unit. Dimensions and square footage are approximate and may vary with actual construction.

THE BUILDING  
690 SW 1st Avenue  
Miami, Florida 33130

THE SALES GALLERY  
115 SW 8th Street (Unit 6) Miami  
Florida 33130

BRICKELL MIAMI

**RESIDENCE 11**

**1 BEDROOM – 1 BATH  
LEVEL 11 – 41**

Interior 552 SF/51 M<sup>2</sup>

Terrace 130 SF/12 M<sup>2</sup>

Total 682 SF - 63 M<sup>2</sup>

Faces South



Furniture, accessories, and layout are for illustrative purposes only.  
Residences are delivered unfurnished unless a furniture upgrade package is purchased.

ORAL REPRESENTATIONS CANNOT BE RELIED UPON AS CORRECTLY STATING THE REPRESENTATIONS OF THE DEVELOPER. FOR CORRECT REPRESENTATIONS, MAKE REFERENCE TO THIS BROCHURE AND TO THE DOCUMENTS REQUIRED BY SECTION 718.503, FLORIDA STATUTES, TO BE FURNISHED BY A DEVELOPER TO A BUYER OR LESSEE. This project is being developed by Loftly™ Brickell LLC (the "Developer"), which was formed solely for such purpose. Any other parties described herein are not the Developer of this project. This Condominium and project are being developed by Loftly™ Brickell LLC, a Delaware limited liability company ("Developer"), which has a limited right to use the trademarked names and logos of Standard International Management, LLC pursuant to a license and marketing agreement with Standard International Management, LLC. Any and all statements, disclosures and/or representations shall be deemed made by Developer and not by Standard International Management, LLC and you agree to look solely to Developer (and not to Standard International Management, LLC and/or any of its affiliates) with respect to any and all matters relating to the marketing and/or development of the Condominium and project and with respect to the sales of units in the Condominium and project. Stated dimensions are measured to the exterior boundaries of the exterior walls and the centerline of interior demising walls and in fact vary from the dimensions that would be determined by using the description and definition of the "Unit" set forth in the Declaration (which generally only includes the interior airspace between the perimeter walls and excludes interior structural components). For your reference, the area of the Unit, determined in accordance with those defined unit boundaries, is 1,385 SF – 129 M<sup>2</sup>. Note that measurements of rooms set forth on this floor plan are generally taken at the greatest points of each given room (as if the room were a perfect rectangle), without regard for any cutouts. Accordingly, the area of the actual room will typically be smaller than the product obtained by multiplying the stated length times width. All dimensions are approximate and may vary with actual construction, and all floor plans and development plans are subject to change. The sketches, renderings, graphic materials, plans, specifications, terms, conditions and statements contained in this brochure are proposed only and may not be applicable to all Units and the Developer reserves the right to modify, revise or withdraw any or all of same in its sole discretion and without prior notice. All improvements, designs and construction are subject to first obtaining the appropriate federal, state and local permits and approvals for same. All depictions of appliances, counters, soffits, floor coverings and other furniture, fixtures, equipment and matters of detail, including, without limitation, items of finish and decoration, are conceptual only and are not necessarily included in each Unit. Consult your Agreement and the Prospectus for the items included with the Unit. Dimensions and square footage are approximate and may vary with actual construction.

THE BUILDING  
690 SW 1st Avenue  
Miami, Florida 33130

THE SALES GALLERY  
115 SW 8th Street (Unit 6) Miami  
Florida 33130

BRICKELL MIAMI

**RESIDENCE 12**

**2 BEDROOMS – 2 BATH  
LEVEL 11 – 41**

Interior 962 SF/89 M<sup>2</sup>

Terrace 112 SF/10 M<sup>2</sup>

Total 1,074 SF - 99 M<sup>2</sup>

Faces Southwest



Furniture, accessories, and layout are for illustrative purposes only.  
Residences are delivered unfurnished unless a furniture upgrade package is purchased.

ORAL REPRESENTATIONS CANNOT BE RELIED UPON AS CORRECTLY STATING THE REPRESENTATIONS OF THE DEVELOPER. FOR CORRECT REPRESENTATIONS, MAKE REFERENCE TO THIS BROCHURE AND TO THE DOCUMENTS REQUIRED BY SECTION 718.503, FLORIDA STATUTES, TO BE FURNISHED BY A DEVELOPER TO A BUYER OR LESSEE. This project is being developed by Loftly™ Brickell LLC (the "Developer"), which was formed solely for such purpose. Any other parties described herein are not the Developer of this project. This Condominium and project are being developed by Loftly™ Brickell LLC, a Delaware limited liability company ("Developer"), which has a limited right to use the trademarked names and logos of Standard International Management, LLC pursuant to a license and marketing agreement with Standard International Management, LLC. Any and all statements, disclosures and/or representations shall be deemed made by Developer and not by Standard International Management, LLC and you agree to look solely to Developer (and not to Standard International Management, LLC and/or any of its affiliates) with respect to any and all matters relating to the marketing and/or development of the Condominium and project and with respect to the sales of units in the Condominium and project. Stated dimensions are measured to the exterior boundaries of the exterior walls and the centerline of interior demising walls and in fact vary from the dimensions that would be determined by using the description and definition of the "Unit" set forth in the Declaration (which generally only includes the interior airspace between the perimeter walls and excludes interior structural components). For your reference, the area of the Unit, determined in accordance with those defined unit boundaries, is 1,386 SF – 129 M<sup>2</sup>. Note that measurements of rooms set forth on this floor plan are generally taken at the greatest points of each given room (as if the room were a perfect rectangle), without regard for any cutouts. Accordingly, the area of the actual room will typically be smaller than the product obtained by multiplying the stated length times width. All dimensions are approximate and may vary with actual construction, and all floor plans and development plans are subject to change. The sketches, renderings, graphic materials, plans, specifications, terms, conditions and statements contained in this brochure are proposed only and may not be applicable to all Units and the Developer reserves the right to modify, revise or withdraw any or all of same in its sole discretion and without prior notice. All improvements, designs and construction are subject to first obtaining the appropriate federal, state and local permits and approvals for same. All depictions of appliances, counters, soffits, floor coverings and other furniture, fixtures, equipment and matters of detail, including, without limitation, items of finish and decoration, are conceptual only and are not necessarily included in each Unit. Consult your Agreement and the Prospectus for the items included with the Unit. Dimensions and square footage are approximate and may vary with actual construction.

THE BUILDING  
690 SW 1st Avenue  
Miami, Florida 33130

THE SALES GALLERY  
115 SW 8th Street (Unit 6) Miami  
Florida 33130

RESIDENCE 14

2 BEDROOMS – 2 BATH + DEN  
LEVEL 11 – 41

Interior 1,099 SF/102 M<sup>2</sup>

Terrace 175 SF/16 M<sup>2</sup>

Total 1,274 SF - 118 M<sup>2</sup>

Faces Northwest



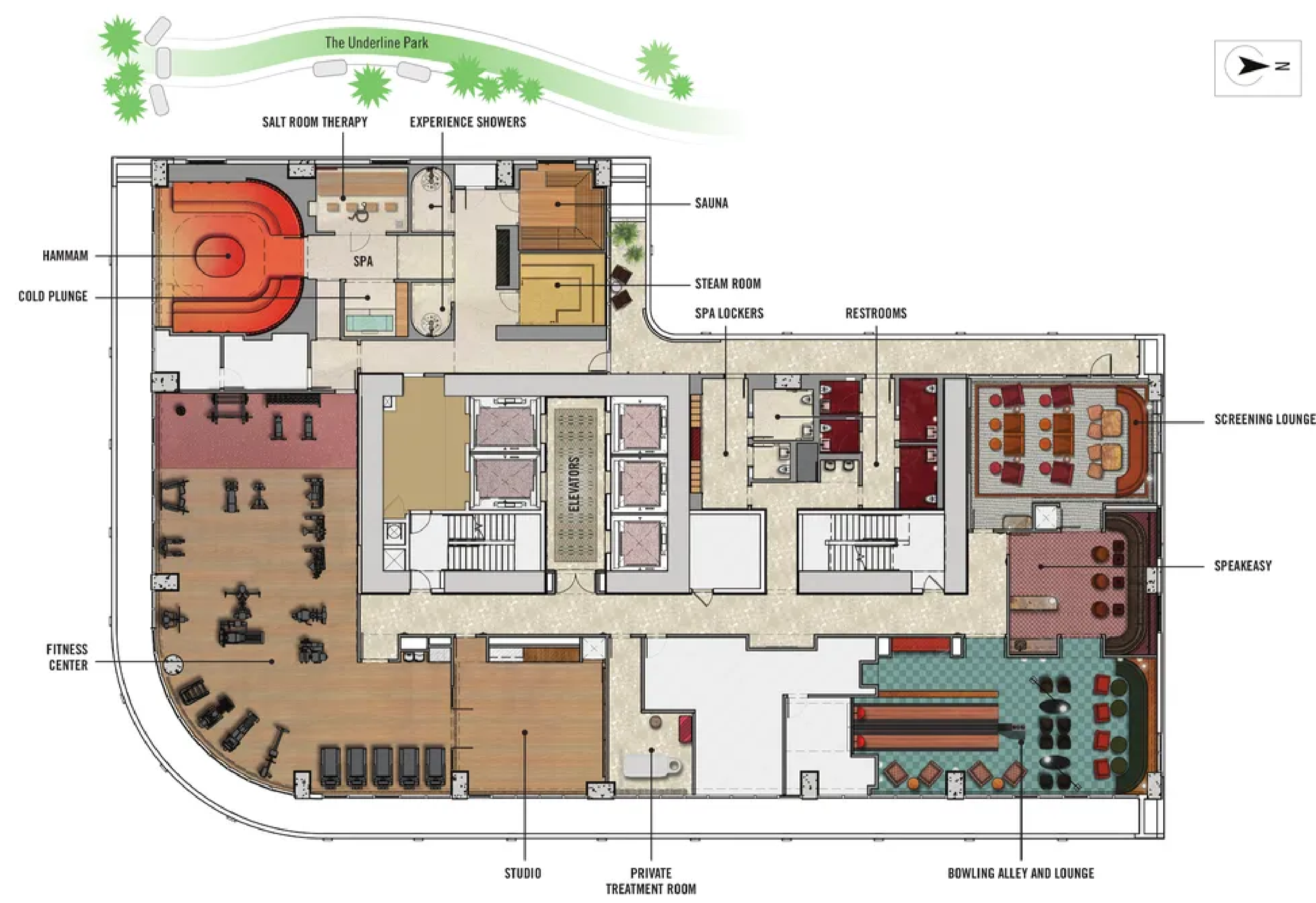
Furniture, accessories, and layout are for illustrative purposes only. Residences are delivered unfurnished unless a furniture upgrade package is purchased.

ORAL REPRESENTATIONS CANNOT BE RELIED UPON AS CORRECTLY STATING THE REPRESENTATIONS OF THE DEVELOPER. FOR CORRECT REPRESENTATIONS, MAKE REFERENCE TO THIS BROCHURE AND TO THE DOCUMENTS REQUIRED BY SECTION 718.503, FLORIDA STATUTES, TO BE FURNISHED BY A DEVELOPER TO A BUYER OR LESSEE. This project is being developed by Loftly™ Brickell LLC (the "Developer"), which was formed solely for such purpose. Any other parties described herein are not the Developer of this project. This Condominium and project are being developed by Loftly™ Brickell LLC, a Delaware limited liability company ("Developer"), which has a limited right to use the trademarked names and logos of Standard International Management, LLC pursuant to a license and marketing agreement with Standard International Management, LLC. Any and all statements, disclosures and/or representations shall be deemed made by Developer and not by Standard International Management, LLC and you agree to look solely to Developer (and not to Standard International Management, LLC and/or any of its affiliates) with respect to any and all matters relating to the marketing and/or development of the Condominium and project and with respect to the sales of units in the Condominium and project. Stated dimensions are measured to the exterior boundaries of the exterior walls and the centerline of interior demising walls and in fact vary from the dimensions that would be determined by using the description and definition of the "Unit" set forth in the Declaration (which generally only includes the interior airspace between the perimeter walls and excludes interior structural components). For your reference, the area of the Unit, determined in accordance with those defined unit boundaries, is 1,385 SF – 129 M<sup>2</sup>. Note that measurements of rooms set forth on this floor plan are generally taken at the greatest points of each given room (as if the room were a perfect rectangle), without regard for any cutouts. Accordingly, the area of the actual room will typically be smaller than the product obtained by multiplying the stated length times width. All dimensions are approximate and may vary with actual construction, and all floor plans and development plans are subject to change. The sketches, renderings, graphic materials, plans, specifications, terms, conditions and statements contained in this brochure are proposed only and may not be applicable to all Units and the Developer reserves the right to modify, revise or withdraw any or all of same in its sole discretion and without prior notice. All improvements, designs and construction are subject to first obtaining the appropriate federal, state and local permits and approvals for same. All depictions of appliances, counters, soffits, floor coverings and other furniture, fixtures, equipment and matters of detail, including, without limitation, items of finish and decoration, are conceptual only and are not necessarily included in each Unit. Consult your Agreement and the Prospectus for the items included with the Unit. Dimensions and square footage are approximate and may vary with actual construction.

THE BUILDING  
690 SW 1st Avenue  
Miami, Florida 33130

THE SALES GALLERY  
115 SW 8th Street (Unit 6)  
Miami Florida 33130

AMENITIES  
FLOOR 10



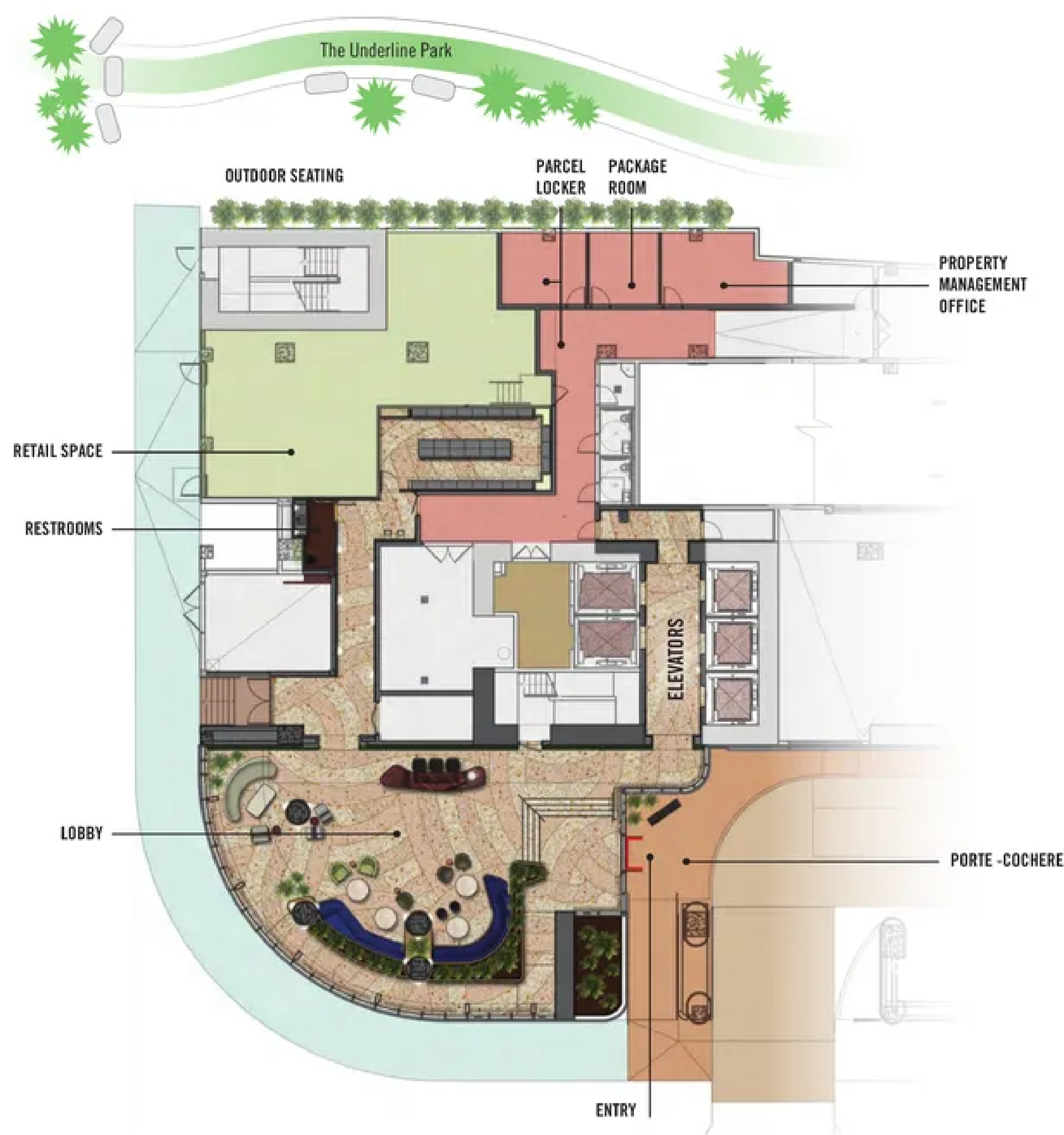
ORAL REPRESENTATIONS CANNOT BE RELIED UPON AS CORRECTLY STATING THE REPRESENTATIONS OF THE DEVELOPER. FOR CORRECT REPRESENTATIONS, MAKE REFERENCE TO THIS BROCHURE AND TO THE DOCUMENTS REQUIRED BY SECTION 718.503, FLORIDA STATUTES, TO BE FURNISHED BY A DEVELOPER TO A BUYER OR LESSEE. This project is being developed by Loftly™ Brickell LLC (the "Developer"), which was formed solely for such purpose. Any other parties described herein are not the Developer of this project. This Condominium and project are being developed by Loftly™ Brickell LLC, a Delaware limited liability company ("Developer"), which has a limited right to use the trademarked names and logos of Standard International Management, LLC pursuant to a license and marketing agreement with Standard International Management, LLC. Any and all statements, disclosures and/or representations shall be deemed made by Developer and not by Standard International Management, LLC and you agree to look solely to Developer (and not to Standard International Management, LLC and/or any of its affiliates) with respect to any and all matters relating to the marketing and/or development of the Condominium and project and with respect to the sales of units in the Condominium and project. Stated dimensions are measured to the exterior boundaries of the exterior walls and the centerline of interior demising walls and in fact vary from the dimensions that would be determined by using the description and definition of the "Unit" set forth in the Declaration (which generally only includes the interior airspace between the perimeter walls and excludes interior structural components). For your reference, the area of the Unit, determined in accordance with those defined unit boundaries, is 1,385 SF – 129 M<sup>2</sup>. Note that measurements of rooms set forth on this floor plan are generally taken at the greatest points of each given room (as if the room were a perfect rectangle), without regard for any cutouts. Accordingly, the area of the actual room will typically be smaller than the product obtained by multiplying the stated length times width. All dimensions are approximate and may vary with actual construction, and all floor plans and development plans are subject to change. The sketches, renderings, graphic materials, plans, specifications, terms, conditions and statements contained in this brochure are proposed only and may not be applicable to all Units and the Developer reserves the right to modify, revise or withdraw any or all of same in its sole discretion and without prior notice. All improvements, designs and construction are subject to first obtaining the appropriate federal, state and local permits and approvals for same. All depictions of appliances, counters, soffits, floor coverings and other furniture, fixtures, equipment and matters of detail, including, without limitation, items of finish and decoration, are conceptual only and are not necessarily included in each Unit. Consult your Agreement and the Prospectus for the items included with the Unit. Dimensions and square footage are approximate and may vary with actual construction.

INQUIRE  
305 200 4044  
thestandardresidencesbrickell.com

THE BUILDING  
690 SW 1st Avenue  
Miami, Florida 33130

THE SALES GALLERY  
115 SW 8th Street (Unit 6)  
Miami Florida 33130

**LOBBY**



INQUIRE  
305 200 4044  
thestandardresidencesbrickell.com

THE BUILDING  
690 SW 1st Avenue  
Miami, Florida 33130

THE SALES GALLERY  
115 SW 8th Street (Unit 6)  
Miami Florida 33130

ORAL REPRESENTATIONS CANNOT BE RELIED UPON AS CORRECTLY STATING THE REPRESENTATIONS OF THE DEVELOPER. FOR CORRECT REPRESENTATIONS, MAKE REFERENCE TO THIS BROCHURE AND TO THE DOCUMENTS REQUIRED BY SECTION 718.503, FLORIDA STATUTES, TO BE FURNISHED BY A DEVELOPER TO A BUYER OR LESSEE. This project is being developed by Lofty™ Brickell LLC (the "Developer"), which was formed solely for such purpose. Any other parties described herein are not the Developer of this project. This Condominium and project are being developed by Lofty™ Brickell LLC, a Delaware limited liability company ("Developer"), which has a limited right to use the trademarked names and logos of Standard International Management, LLC pursuant to a license and marketing agreement with Standard International Management, LLC. Any and all statements, disclosures and/or representations shall be deemed made by Developer and not by Standard International Management, LLC and you agree to look solely to Developer (and not to Standard International Management, LLC and/or any of its affiliates) with respect to any and all matters relating to the marketing and/or development of the Condominium and project and with respect to the sales of units in the Condominium and project. Stated dimensions are measured to the exterior boundaries of the exterior walls and the centerline of interior demising walls and in fact vary from the dimensions that would be determined by using the description and definition of the "Unit" set forth in the Declaration (which generally only includes the interior airspace between the perimeter walls and excludes interior structural components). For your reference, the area of the Unit, determined in accordance with those defined unit boundaries, is 1,386 SF - 129 M<sup>2</sup>. Note that measurements of rooms set forth on this floor plan are generally taken at the greatest points of each given room (as if the room were a perfect rectangle), without regard for any cutouts. Accordingly, the area of the actual room will typically be smaller than the product obtained by multiplying the stated length times width. All dimensions are approximate and may vary with actual construction, and all floor plans and development plans are subject to change. The sketches, renderings, graphic materials, plans, specifications, terms, conditions and statements contained in this brochure are proposed only and may not be applicable to all Units and the Developer reserves the right to modify, revise or withdraw any or all of same in its sole discretion and without prior notice. All improvements, designs and construction are subject to first obtaining the appropriate federal, state and local permits and approvals for same. All depictions of appliances, counters, soffits, floor coverings and other furniture, fixtures, equipment and matters of detail, including, without limitation, items of finish and decoration, are conceptual only and are not necessarily included in each Unit. Consult your Agreement and the Prospectus for the items included with the Unit. Dimensions and square footage are approximate and may vary with actual construction.

**ROOFTOP AMENITIES**



INQUIRE  
305 200 4044  
thestandardresidencesbrickell.com

THE BUILDING  
690 SW 1st Avenue  
Miami, Florida 33130

THE SALES GALLERY  
115 SW 8th Street (Unit 6)  
Miami Florida 33130

ORAL REPRESENTATIONS CANNOT BE RELIED UPON AS CORRECTLY STATING THE REPRESENTATIONS OF THE DEVELOPER. FOR CORRECT REPRESENTATIONS, MAKE REFERENCE TO THIS BROCHURE AND TO THE DOCUMENTS REQUIRED BY SECTION 718.503, FLORIDA STATUTES, TO BE FURNISHED BY A DEVELOPER TO A BUYER OR LESSEE. This project is being developed by Lofty™ Brickell LLC (the "Developer"), which was formed solely for such purpose. Any other parties described herein are not the Developer of this project. This Condominium and project are being developed by Lofty™ Brickell LLC, a Delaware limited liability company ("Developer"), which has a limited right to use the trademarked names and logos of Standard International Management, LLC pursuant to a license and marketing agreement with Standard International Management, LLC. Any and all statements, disclosures and/or representations shall be deemed made by Developer and not by Standard International Management, LLC and you agree to look solely to Developer (and not to Standard International Management, LLC and/or any of its affiliates) with respect to any and all matters relating to the marketing and/or development of the Condominium and project and with respect to the sales of units in the Condominium and project. Stated dimensions are measured to the exterior boundaries of the exterior walls and the centerline of interior demising walls and in fact vary from the dimensions that would be determined by using the description and definition of the "Unit" set forth in the Declaration (which generally only includes the interior airspace between the perimeter walls and excludes interior structural components). For your reference, the area of the Unit, determined in accordance with those defined unit boundaries, is 1,386 SF - 129 M<sup>2</sup>. Note that measurements of rooms set forth on this floor plan are generally taken at the greatest points of each given room (as if the room were a perfect rectangle), without regard for any cutouts. Accordingly, the area of the actual room will typically be smaller than the product obtained by multiplying the stated length times width. All dimensions are approximate and may vary with actual construction, and all floor plans and development plans are subject to change. The sketches, renderings, graphic materials, plans, specifications, terms, conditions and statements contained in this brochure are proposed only and may not be applicable to all Units and the Developer reserves the right to modify, revise or withdraw any or all of same in its sole discretion and without prior notice. All improvements, designs and construction are subject to first obtaining the appropriate federal, state and local permits and approvals for same. All depictions of appliances, counters, soffits, floor coverings and other furniture, fixtures, equipment and matters of detail, including, without limitation, items of finish and decoration, are conceptual only and are not necessarily included in each Unit. Consult your Agreement and the Prospectus for the items included with the Unit. Dimensions and square footage are approximate and may vary with actual construction.

**BRICKELL MIAMI**

**KEY PLAN - TYPICAL FLOOR**

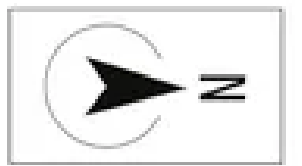
- Studio
- 1 Bedroom, 1 Bathroom
- 2 Bedroom, 2 Bath
- 2 Bedroom, 2 Bath + Den

INQUIRE  
305 200 4044  
thestandardresidencesbrickell.com

THE BUILDING  
690 SW 1st Avenue  
Miami, Florida 33130

THE SALES GALLERY  
115 SW 8th Street (Unit 6)  
Miami Florida 33130

**The Underline Park**



ORAL REPRESENTATIONS CANNOT BE RELIED UPON AS CORRECTLY STATING THE REPRESENTATIONS OF THE DEVELOPER. FOR CORRECT REPRESENTATIONS, MAKE REFERENCE TO THIS BROCHURE AND TO THE DOCUMENTS REQUIRED BY SECTION 718.503, FLORIDA STATUTES, TO BE FURNISHED BY A DEVELOPER TO A BUYER OR LESSEE. This project is being developed by Lofty Brickell LLC (the "Developer"), which was formed solely for such purpose. Any other parties described herein are not the Developer of this project. This Condominium and project are being developed by Lofty Brickell LLC, a Delaware limited liability company ("Developer"), which has a limited right to use the trademarked names and logos of Standard International Management, LLC pursuant to a license and marketing agreement with Standard International Management, LLC. Any and all statements, disclosures and/or representations shall be deemed made by Developer and not by Standard International Management, LLC and you agree to look solely to Developer (and not to Standard International Management, LLC and/or any of its affiliates) with respect to any and all matters relating to the marketing and/or development of the Condominium and project and with respect to the sales of units in the Condominium and project. All dimensions are approximate and may vary with actual construction, and all floor plans and development plans are subject to change. Dimensions and square footage are approximate and may vary with actual construction.