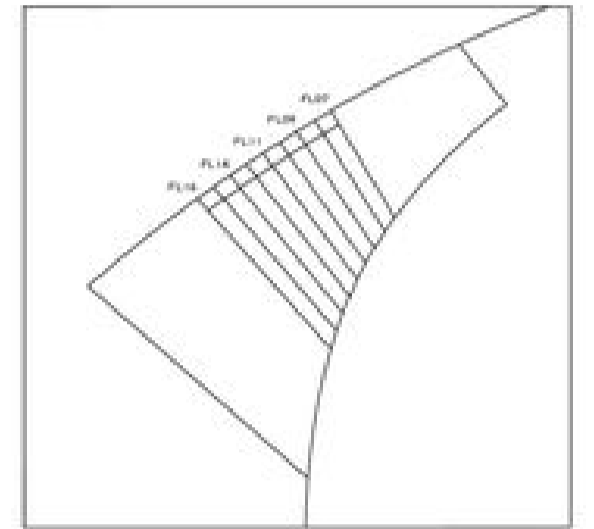
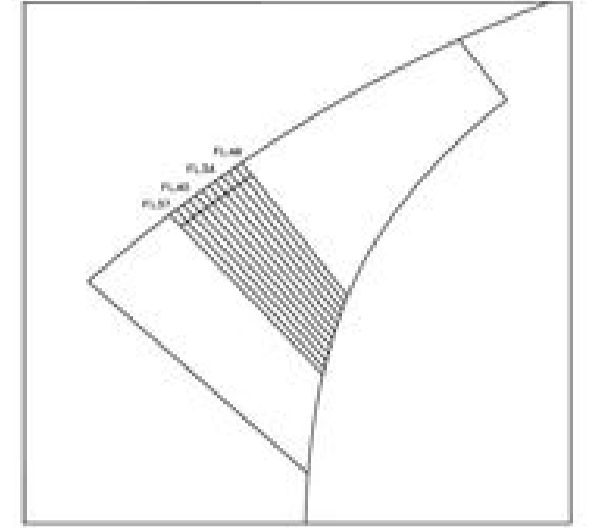
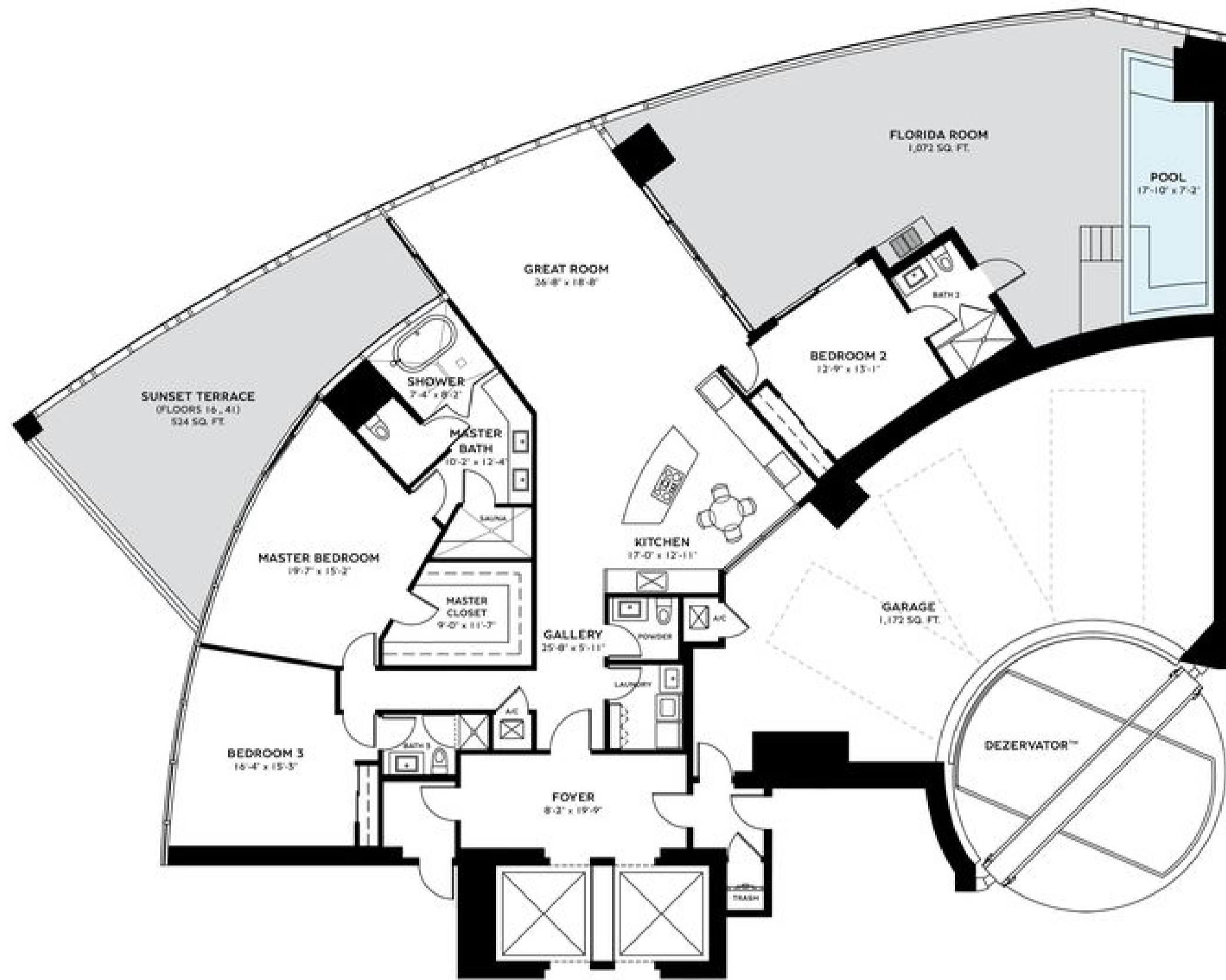
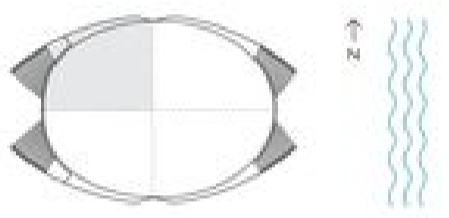


**RESIDENCE BACALAR**  
3 BEDS | 3.5 BATHS  
FLOORS 16, 41

INTERIOR	2,835 SQ. FT.	263.38 SQ. M.
BALCONY	1,596 SQ. FT.	148.27 SQ. M.
GARAGE	1,172 SQ. FT.	108.88 SQ. M.
<b>TOTAL</b>	<b>5,603 SQ. FT.</b>	<b>520.54 SQ. M.</b>

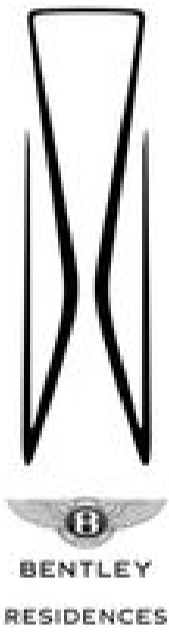


TERRACE AREA VARIES BY FLOOR



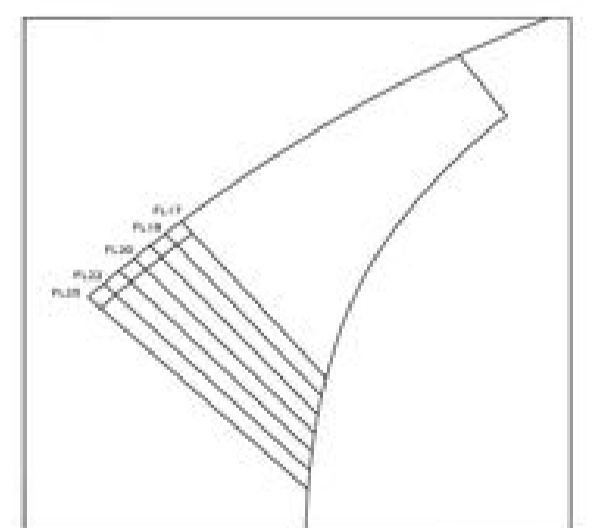
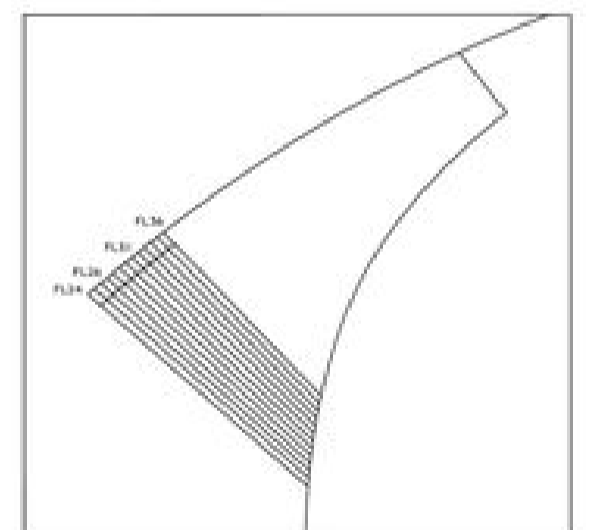
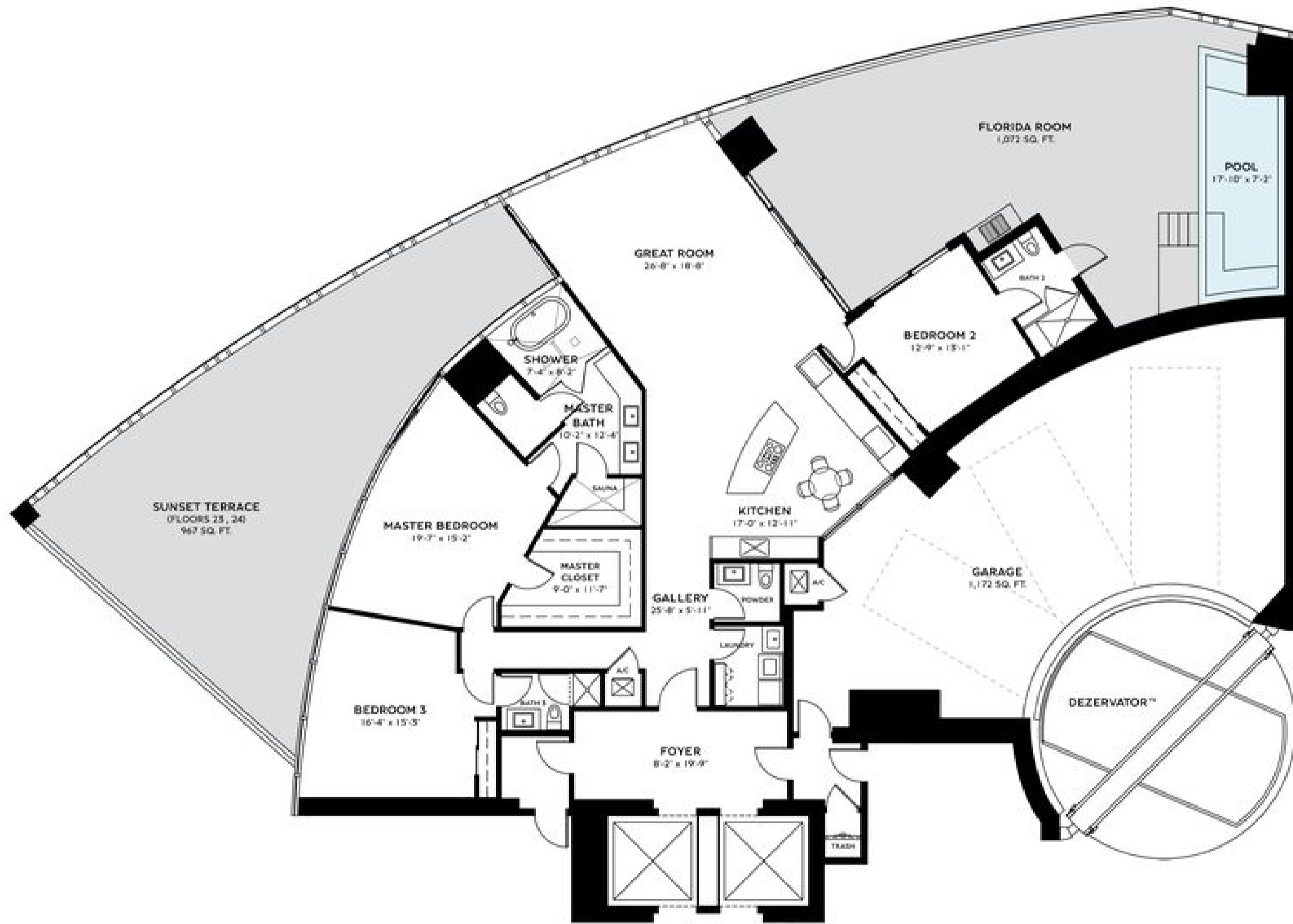
Sales Gallery: 18525 Collins Avenue, Sunny Isles Beach, FL 33160  
Tel 305 BENTLEY (305 256 8559) [bentleyresidencesmiami.com](http://bentleyresidencesmiami.com)

ORAL REPRESENTATIONS CANNOT BE RELIED UPON AS CORRECTLY STATING THE REPRESENTATIONS OF THE DEVELOPER. FOR CORRECT REPRESENTATIONS, MAKE REFERENCE TO THIS BROCHURE AND TO THE DOCUMENTS REQUIRED BY SECTION 718.505, FLORIDA STATUTES, TO BE FURNISHED BY A DEVELOPER TO A BUYER OR LESSEE. Stated dimensions are measured to the exterior boundaries of the exterior walls and the centerline of interior demising walls and in fact vary from the dimensions that would be determined by using the description and definition of the "Unit" set forth in the Declaration (which generally only includes the interior airspace between the perimeter walls and excludes interior structural components). For your reference, the area of the Unit, determined in accordance with those defined unit boundaries, is described on Exhibit 3 to the Declaration. Note that measurements of rooms set forth on this floor plan are generally taken at the greatest points of each given room (as if the room were a perfect rectangle), without regard for any cutouts. Accordingly, the area of the actual room will typically be smaller than the product obtained by multiplying the stated length times width. All dimensions are approximate and may vary with actual construction, and all floor plans and development plans are subject to change. The name "Bentley" is a registered trademark. © 2022 Bentley Residences.

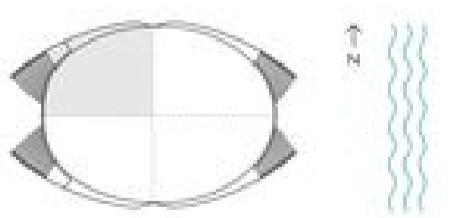


**RESIDENCE BACALAR**  
3 BEDS | 3.5 BATHS  
FLOORS 23, 24

INTERIOR	2,835 SQ. FT.	263.38 SQ. M.
BALCONY	2,039 SQ. FT.	189.45 SQ. M.
GARAGE	1,172 SQ. FT.	108.88 SQ. M.
<b>TOTAL</b>	<b>6,046 SQ. FT.</b>	<b>561.69 SQ. M.</b>

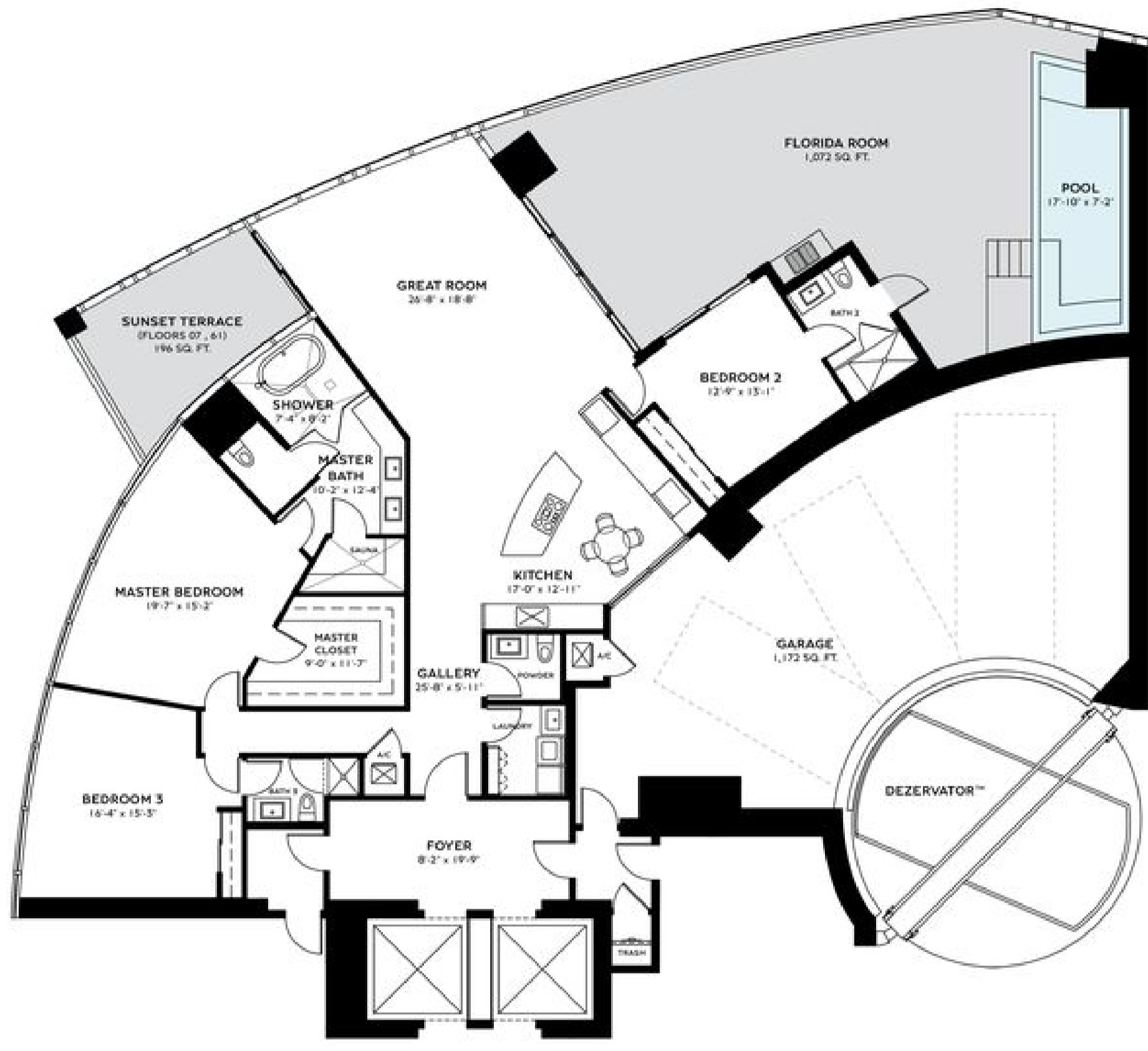
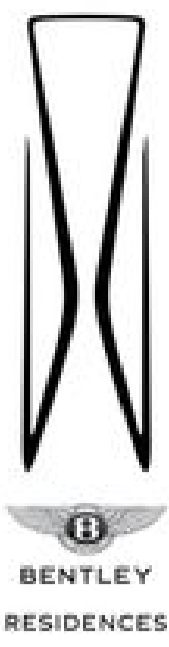


TERRACE AREA VARIES BY FLOOR



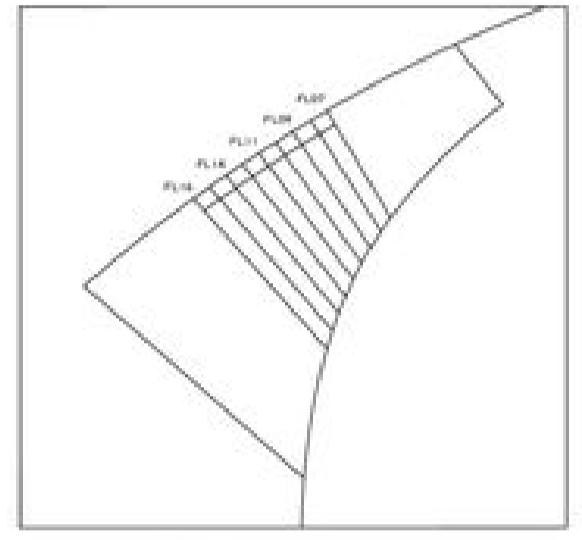
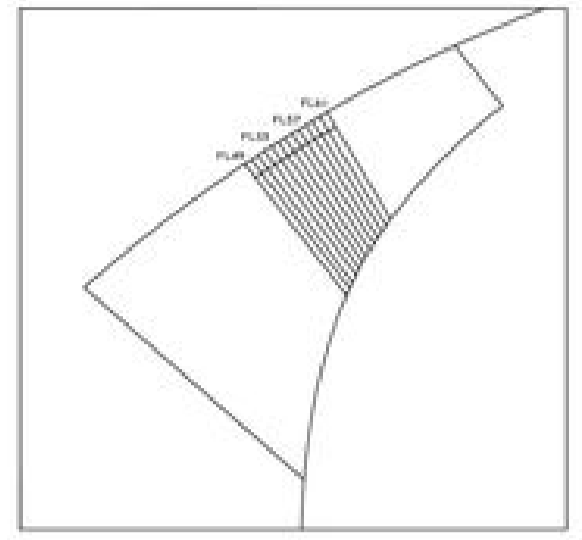
Sales Gallery: 18525 Collins Avenue, Sunny Isles Beach, FL 33160  
Tel 305 BENTLEY (305 256 8559) [bentleyresidencesmiami.com](http://bentleyresidencesmiami.com)

ORAL REPRESENTATIONS CANNOT BE RELIED UPON AS CORRECTLY STATING THE REPRESENTATIONS OF THE DEVELOPER. FOR CORRECT REPRESENTATIONS, MAKE REFERENCE TO THIS BROCHURE AND TO THE DOCUMENTS REQUIRED BY SECTION 718.505, FLORIDA STATUTES, TO BE FURNISHED BY A DEVELOPER TO A BUYER OR LESSEE. Stated dimensions are measured to the exterior boundaries of the exterior walls and the centerline of interior demising walls and in fact vary from the dimensions that would be determined by using the description and definition of the "Unit" set forth in the Declaration (which generally only includes the interior airspace between the perimeter walls and excludes interior structural components). For your reference, the area of the Unit, determined in accordance with those defined unit boundaries, is described on Exhibit 3 to the Declaration. Note that measurements of rooms set forth on this floor plan are generally taken at the greatest points of each given room (as if the room were a perfect rectangle), without regard for any cutouts. Accordingly, the area of the actual room will typically be smaller than the product obtained by multiplying the stated length times width. All dimensions are approximate and may vary with actual construction, and all floor plans and development plans are subject to change. The name "Bentley" is a registered trademark. © 2022 Bentley Residences.

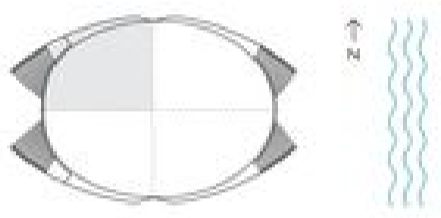


**RESIDENCE BACALAR**  
**3 BEDS | 3.5 BATHS**  
 FLOORS 07, 61

INTERIOR	2,835 SQ. FT.	263.38 SQ. M.
BALCONY	1,268 SQ. FT.	117.80 SQ. M.
GARAGE	1,172 SQ. FT.	108.88 SQ. M.
<b>TOTAL</b>	<b>5,275 SQ. FT.</b>	<b>490.06 SQ. M.</b>

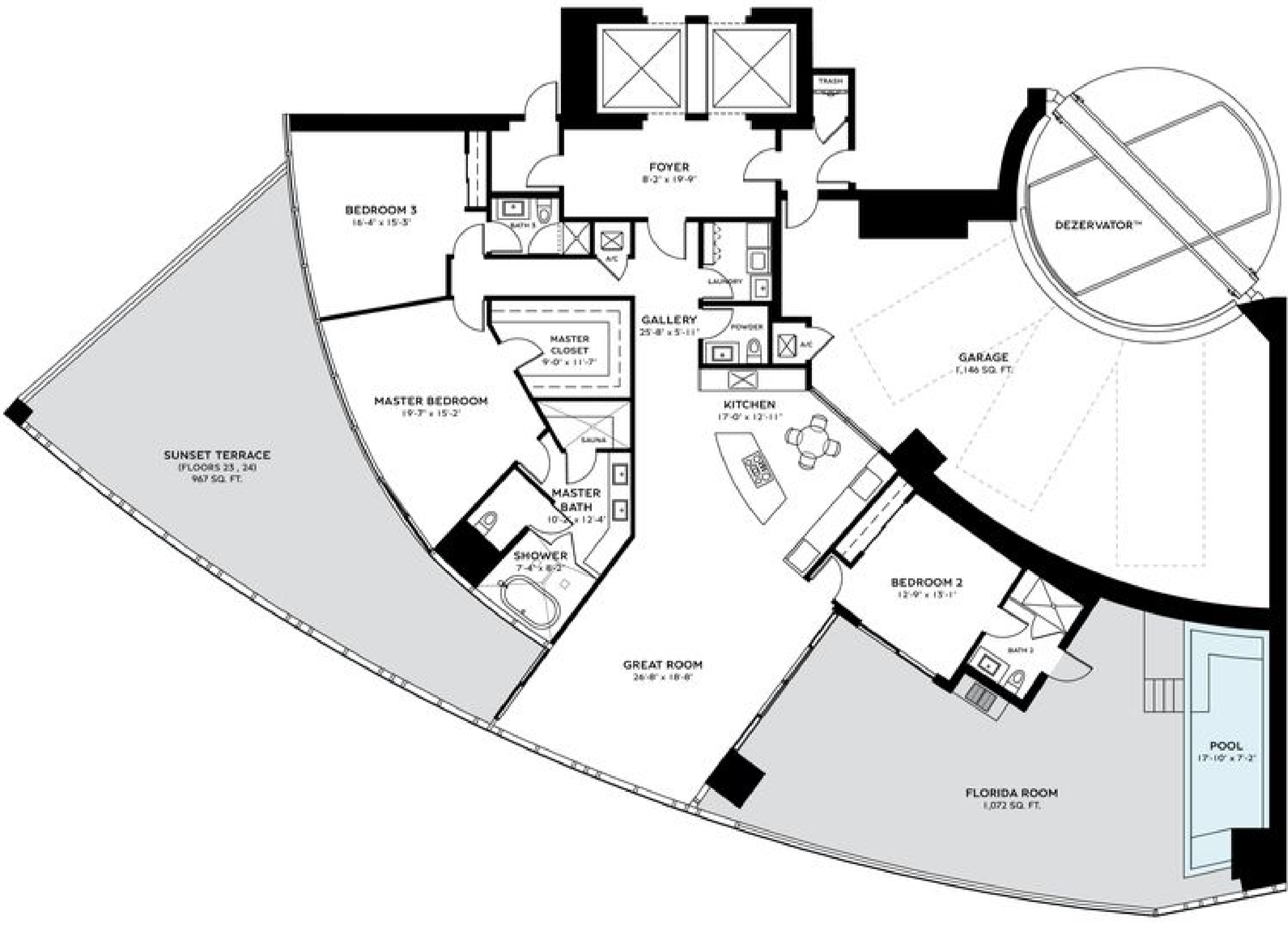
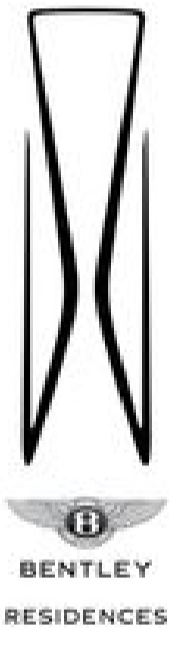


TERRACE AREA VARIES BY FLOOR



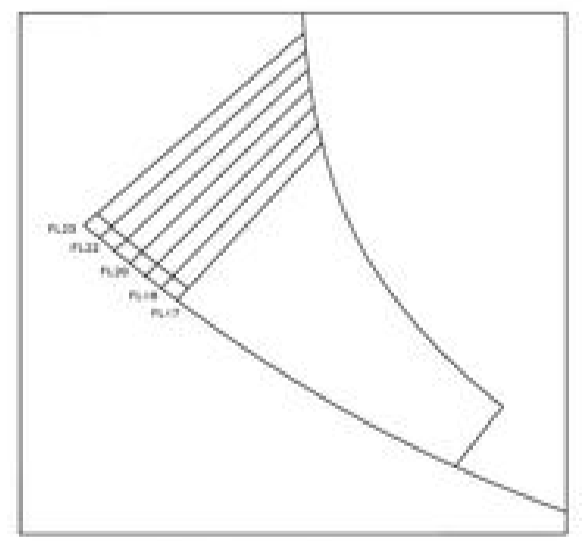
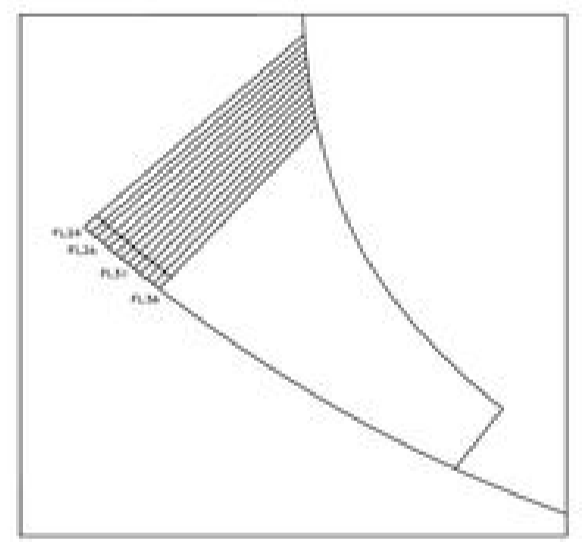
DEZER  
 Sales Gallery: 18525 Collins Avenue, Sunny Isles Beach, FL 33160  
 Tel 305 BENTLEY (305 256 8559) [bentleyresidencesmiami.com](http://bentleyresidencesmiami.com)

ORAL REPRESENTATIONS CANNOT BE RELIED UPON AS CORRECTLY STATING THE REPRESENTATIONS OF THE DEVELOPER. FOR CORRECT REPRESENTATIONS, MAKE REFERENCE TO THIS BROCHURE AND TO THE DOCUMENTS REQUIRED BY SECTION 718.505, FLORIDA STATUTES, TO BE FURNISHED BY A DEVELOPER TO A BUYER OR LESSEE. Stated dimensions are measured to the exterior boundaries of the exterior walls and the centerline of interior demising walls and in fact vary from the dimensions that would be determined by using the description and definition of the "Unit" set forth in the Declaration (which generally only includes the interior airspace between the perimeter walls and excludes interior structural components). For your reference, the area of the Unit, determined in accordance with those defined unit boundaries, is described on Exhibit 3 to the Declaration. Note that measurements of rooms set forth on this floor plan are generally taken at the greatest points of each given room (as if the room were a perfect rectangle), without regard for any cutouts. Accordingly, the area of the actual room will typically be smaller than the product obtained by multiplying the stated length times width. All dimensions are approximate and may vary with actual construction, and all floor plans and development plans are subject to change. The name "Bentley" is a registered trademark. © 2022 Bentley Residences.

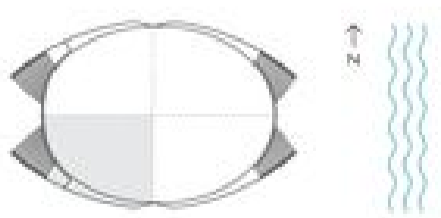


**RESIDENCE BENTAYGA**  
**3 BEDS | 3.5 BATHS**  
 FLOORS 23, 24

INTERIOR	2,835 SQ. FT.	263.38 SQ. M.
BALCONY	2,039 SQ. FT.	189.45 SQ. M.
GARAGE	1,146 SQ. FT.	106.47 SQ. M.
<b>TOTAL</b>	<b>6,020 SQ. FT.</b>	<b>559.28 SQ. M.</b>

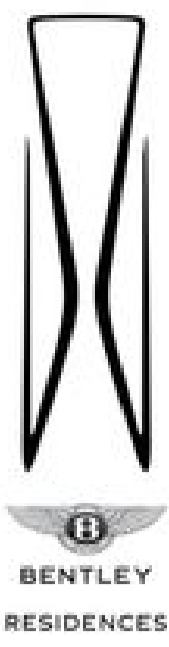


TERRACE AREA VARIES BY FLOOR



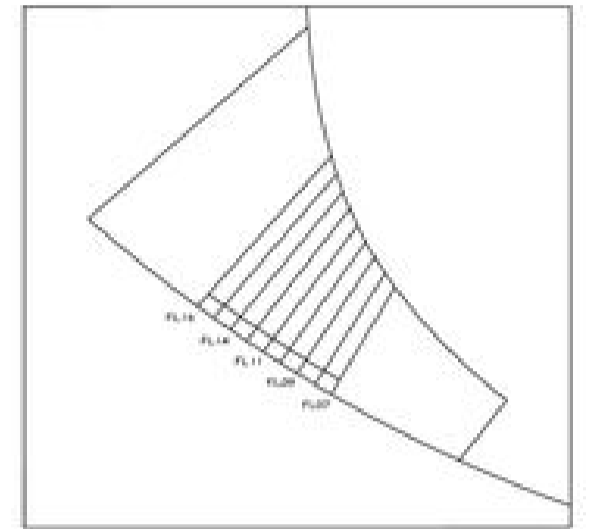
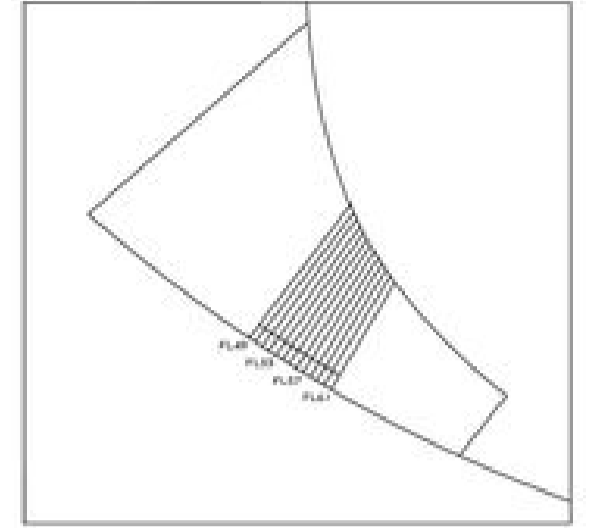
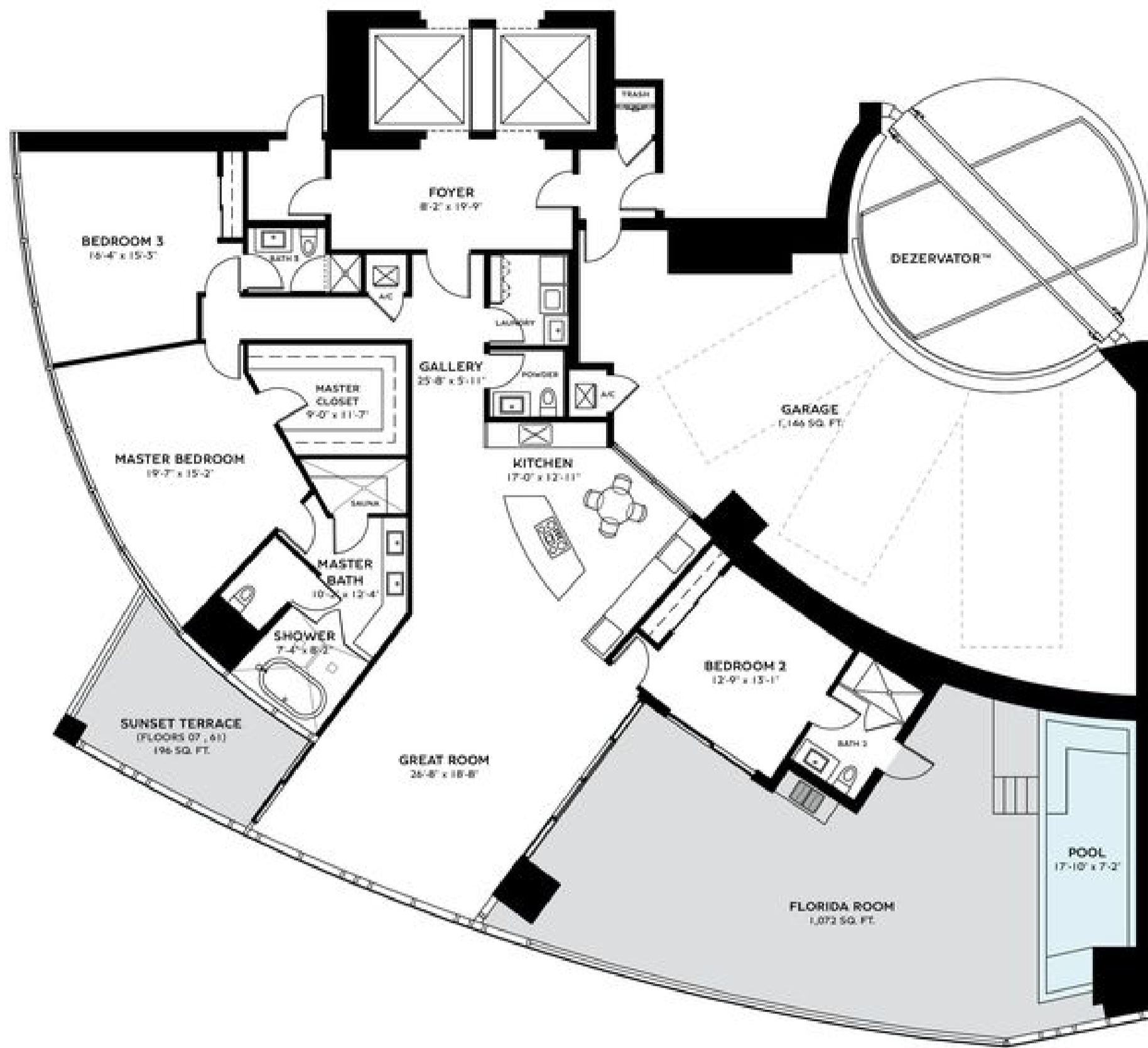
DEZER  
 Sales Gallery: 18525 Collins Avenue, Sunny Isles Beach, FL 33160  
 Tel 305 BENTLEY (305 256 8559) [bentleyresidencesmiami.com](http://bentleyresidencesmiami.com)

ORAL REPRESENTATIONS CANNOT BE RELIED UPON AS CORRECTLY STATING THE REPRESENTATIONS OF THE DEVELOPER. FOR CORRECT REPRESENTATIONS, MAKE REFERENCE TO THIS BROCHURE AND TO THE DOCUMENTS REQUIRED BY SECTION 718.505, FLORIDA STATUTES, TO BE FURNISHED BY A DEVELOPER TO A BUYER OR LESSEE. Stated dimensions are measured to the exterior boundaries of the exterior walls and the centerline of interior demising walls and in fact vary from the dimensions that would be determined by using the description and definition of the "Unit" set forth in the Declaration (which generally only includes the interior airspace between the perimeter walls and excludes interior structural components). For your reference, the area of the Unit, determined in accordance with those defined unit boundaries, is described on Exhibit 3 to the Declaration. Note that measurements of rooms set forth on this floor plan are generally taken at the greatest points of each given room (as if the room were a perfect rectangle), without regard for any cutouts. Accordingly, the area of the actual room will typically be smaller than the product obtained by multiplying the stated length times width. All dimensions are approximate and may vary with actual construction, and all floor plans and development plans are subject to change. The name "Bentley" is a registered trademark. © 2022 Bentley Residences.

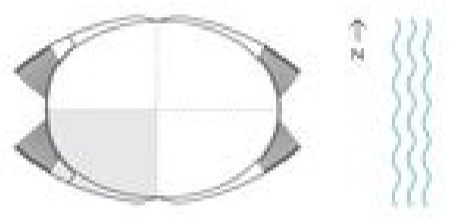


**RESIDENCE BENTAYGA**  
3 BEDS | 3.5 BATHS  
FLOORS 07, 61

INTERIOR	2,855 SQ. FT.	263.38 SQ. M.
BALCONY	1,268 SQ. FT.	117.80 SQ. M.
GARAGE	1,146 SQ. FT.	106.47 SQ. M.
<b>TOTAL</b>	<b>5,249 SQ. FT.</b>	<b>487.65 SQ. M.</b>



TERRACE AREA VARIES BY FLOOR



Sales Gallery: 18325 Collins Avenue, Sunny Isles Beach, FL 33160  
Tel 305 BENTLEY (305 256 8559) [bentleyresidencesmiami.com](http://bentleyresidencesmiami.com)

ORAL REPRESENTATIONS CANNOT BE RELIED UPON AS CORRECTLY STATING THE REPRESENTATIONS OF THE DEVELOPER. FOR CORRECT REPRESENTATIONS, MAKE REFERENCE TO THIS BROCHURE AND TO THE DOCUMENTS REQUIRED BY SECTION 718.505, FLORIDA STATUTES, TO BE FURNISHED BY A DEVELOPER TO A BUYER OR LESSEE. Stated dimensions are measured to the exterior boundaries of the exterior walls and the centerline of interior demising walls and in fact vary from the dimensions that would be determined by using the description and definition of the "Unit" set forth in the Declaration (which generally only includes the interior airspace between the perimeter walls and excludes interior structural components). For your reference, the area of the Unit, determined in accordance with those defined unit boundaries, is described on Exhibit 3 to the Declaration. Note that measurements of rooms set forth on this floor plan are generally taken at the greatest points of each given room (as if the room were a perfect rectangle), without regard for any cutouts. Accordingly, the area of the actual room will typically be smaller than the product obtained by multiplying the stated length times width. All dimensions are approximate and may vary with actual construction, and all floor plans and development plans are subject to change. The name "Bentley" is a registered trademark. © 2022 Bentley Residences.

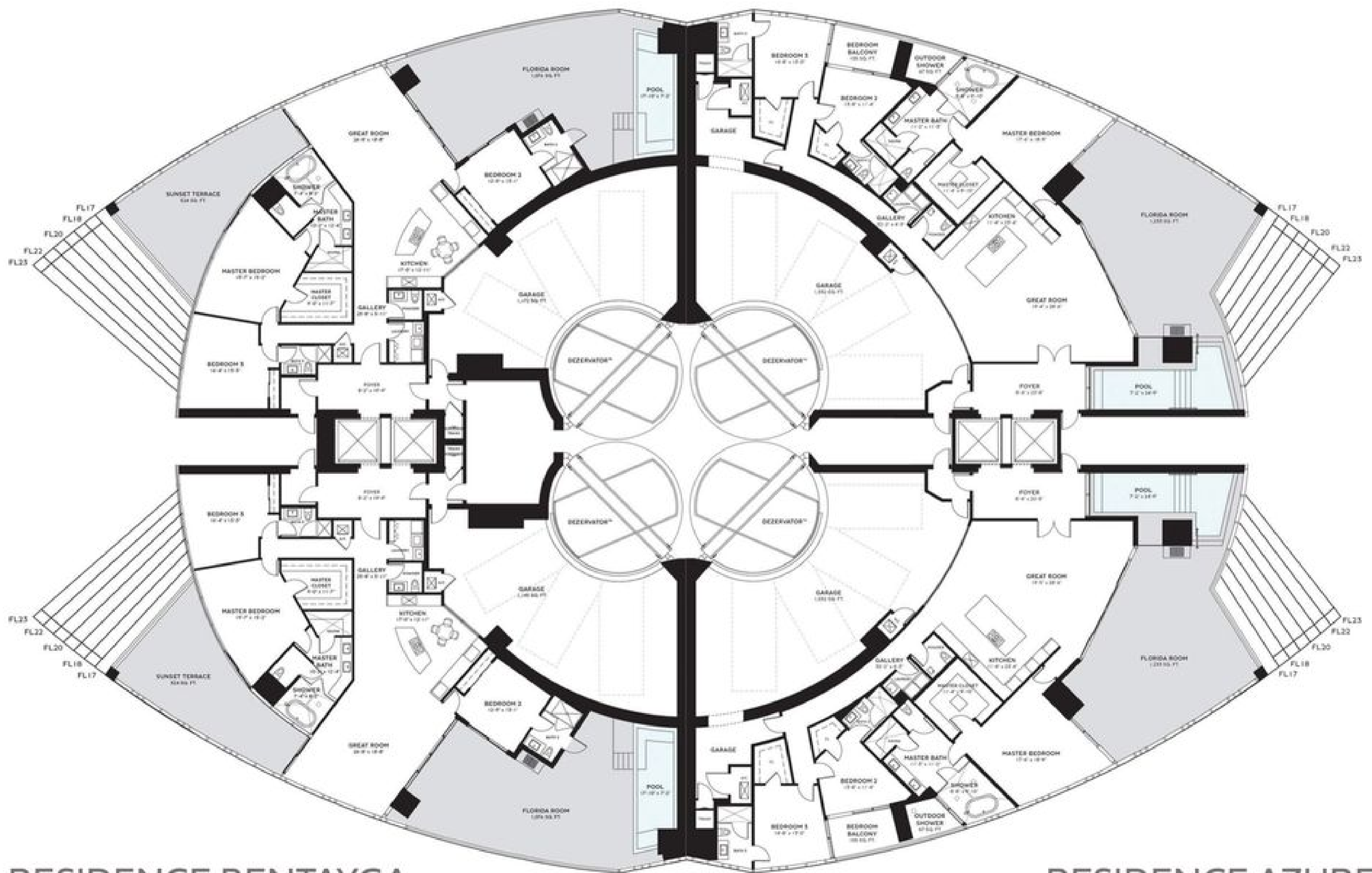


**RESIDENCE BACALAR**

FL 7-61 FL 16-41 FL 23-24

**RESIDENCE ARNAGE**

FL 7-61 FL 16-41 FL 23-24



**RESIDENCE BENTAYGA**

FL 7-61 FL 16-41 FL 23-24

**RESIDENCE AZURE**

FL 7-61 FL 16-41 FL 23-24



Stated dimensions are measured to the exterior boundaries of the exterior walls and the centerline of interior demising walls and in fact vary from the dimensions that would be determined by using the description and definition of the "Unit" set forth in the Declaration (which generally only includes the interior airspace between the perimeter walls and excludes interior structural components). For your reference, the area of the Unit, determined in accordance with those defined unit boundaries, is described on Exhibit 3 to the Declaration. Note that measurements of rooms set forth on this floor plan are generally taken at the greatest points of each given room (as if the room were a perfect rectangle), without regard for any cutouts. Accordingly, the area of the actual room will typically be smaller than the product obtained by multiplying the stated length times width. All dimensions are approximate and may vary with actual construction, and all floor plans and development plans are subject to change.